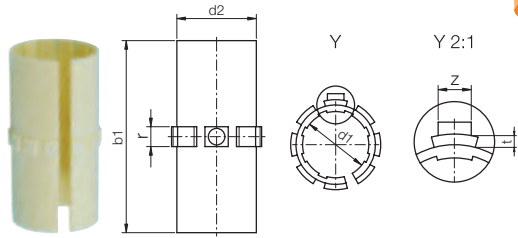
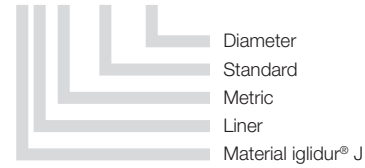


## Closed, long design



Order key

## JUM-01-10



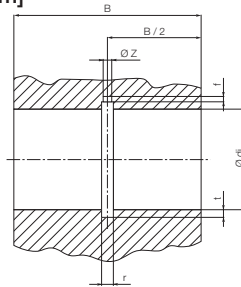
\* according to igus® testing method ► page 1035  
 Ø < 10 use iglidur® JSM sleeve bearings ► p. 118  
 Please note: Installation instructions ► page 983

## Dimensions [mm]

Part number	d1	Tolerance*	d2	b1	r	t	z	Weight [g]
JUM-01-10	10	+0.030 +0.070	12	28	3.0	0.8	2.5	1.10
JUM-01-12	12	+0.030 +0.070	14	31	3.0	0.8	3.0	1.50
JUM-01-16	16	+0.030 +0.070	18	35	3.5	0.8	3.5	2.20
JUM-01-20	20	+0.030 +0.070	23	44	5.0	0.8	3.5	4.90
JUM-01-25	25	+0.030 +0.070	28	57	5.0	0.8	4.0	8.23
JUM-01-30	30	+0.040 +0.085	34	67	5.0	0.8	4.0	14.95
JUM-01-35	35	+0.040 +0.085	39	69	5.0	0.8	4.0	18.20
JUM-01-40	40	+0.040 +0.085	44	79	6.0	1.3	5.0	23.16
JUM-01-50	50	+0.050 +0.100	55	99	7.0	1.3	6.0	45.35
JUM-01-60**	60	+0.050 +0.100	65	124	8.0	2.5	6.5	70.00

## Installation Drawings Housing Bore for Liner JUM-01 | Dimensions [mm]

Part number	Shaft Ø	d1 H7	B h10	W +0.2	r +0.05	t +0.1	f +0.5	z +0.2
JUM-01-10	10	12	29	7.3	3.0	1.0	1.0	2.6
JUM-01-12	12	14	32	9.0	3.0	1.0	1.5	3.1
JUM-01-16	16	18	36	11.6	3.5	1.0	1.7	3.6
JUM-01-20	20	23	45	12.0	5.0	1.0	2.0	3.6
JUM-01-25	25	28	58	14.5	5.0	1.0	2.0	4.1
JUM-01-30	30	34	68	16.6	5.0	1.0	2.0	4.1
JUM-01-35	35	39	70	17.0	5.0	1.0	2.0	4.1
JUM-01-40	40	44	80	21.0	6.0	1.5	2.5	5.1
JUM-01-50	50	55	100	25.5	7.0	1.5	2.5	6.1
JUM-01-60**	60	65	125	27.2	8.0	2.5	3.0	6.5



\*\* in two parts

Can be combined with:

RJUM-01/-03  
TJUM-01/-03

RJUM-06/-06-LL



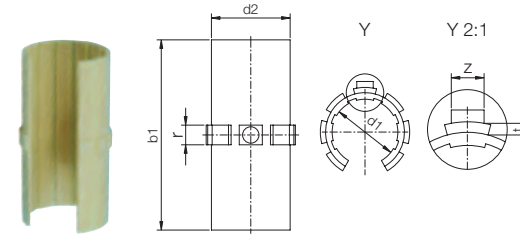
FJUM-01/-02



prices price list online  
[www.igus.eu/eu/drylinR](http://www.igus.eu/eu/drylinR)

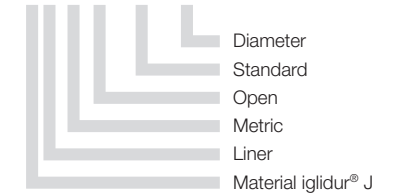
delivery from stock  
 time

## Open, long design



Order key

## JUMO-01-10



\* according to igus® testing method ► page 1035  
 Please note: Installation instructions ► page 983

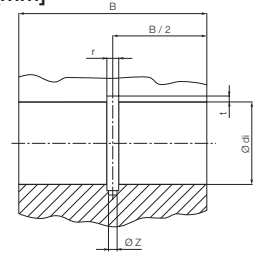
● For supported shafts

## Dimensions [mm]

Part number	d1	Tolerance*	d2	b1	r	t	z	Weight [g]
JUMO-01-10	10	+0.030 +0.070	12	28	3.0	0.8	2.5	0.90
JUMO-01-12	12	+0.030 +0.070	14	31	3.0	0.8	3.0	1.16
JUMO-01-16	16	+0.030 +0.070	18	35	3.5	0.8	3.5	1.71
JUMO-01-20	20	+0.030 +0.070	23	44	5.0	0.8	3.5	4.16
JUMO-01-25	25	+0.030 +0.070	28	57	5.0	0.8	4.0	6.97
JUMO-01-30	30	+0.040 +0.085	34	67	5.0	0.8	4.0	12.38
JUMO-01-40	40	+0.040 +0.085	44	79	6.0	1.3	5.0	20.18
JUMO-01-50	50	+0.050 +0.100	55	99	7.0	1.3	6.0	38.60
JUMO-01-60**	60	+0.050 +0.100	65	124	8.0	2.5	6.5	60.10

## Installation Drawings Housing Bore for Liner JUMO-01 | Dimensions [mm]

Part number	Shaft Ø	d1 H7	B h10	W +0.2	r +0.05	t +0.1	f +0.5	z +0.2
JUMO-01-10	10	12	29	7.3	3.0	1.0	1.0	2.6
JUMO-01-12	12	14	32	9.0	3.0	1.0	1.5	3.1
JUMO-01-16	16	18	36	11.6	3.5	1.0	1.7	3.6
JUMO-01-20	20	23	45	12.0	5.0	1.0	2.0	3.6
JUMO-01-25	25	28	58	14.5	5.0	1.0	2.0	4.1
JUMO-01-30	30	34	68	16.6	5.0	1.0	2.0	4.1
JUMO-01-40	40	44	80	21.0	6.0	1.5	2.5	5.1
JUMO-01-50	50	55	100	25.5	7.0	1.5	2.5	6.1
JUMO-01-60**	60	65	125	27.2	8.0	2.5	3.0	6.5



\*\* in two parts

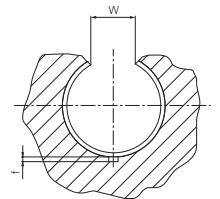
Can be combined with:



OJUM-01/-03



OJUM-06/-06-LL



prices price list online  
[www.igus.eu/eu/drylinR](http://www.igus.eu/eu/drylinR)

delivery from stock  
 time