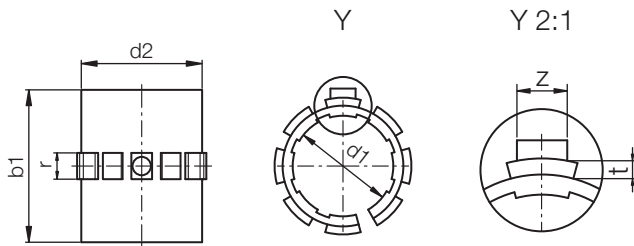




# DryLin® R | Liner JUM-02 | mm | extra short liner



Structure – part no.  
**J U M-02-10**



- Diameter
- Short v.
- Metric
- Liner
- iglidur® J

mm

DryLin® R

## Special properties

- Very low coefficients of friction while running dry
- Very low moisture absorption
- Very high wear resistance
- High chemical resistance
- Maintenance-free dry running
- Suitable for rotating, oscillating and linear movements
- Vibration dampening

\* According to iglus® testing method

► Page 64.37



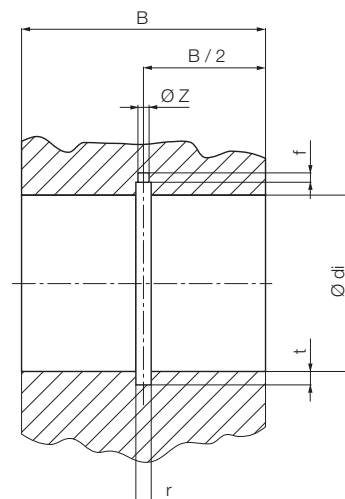
Available from stock

## Dimensions [mm] and Weight

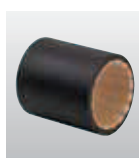
Part No.	d1 [mm]	Tolerance* [mm]	d2 [mm]	b1 [mm]	r [mm]	t [mm]	z [mm]	Weight [g]
JUM-02-10	10	0,03-0,070	12	25	3,0	0,8	2,5	1,02
JUM-02-12	12	0,03-0,070	14	27	3,0	0,8	3,0	1,27
JUM-02-16	16	0,03-0,070	18	29	3,5	0,8	3,5	1,82
JUM-02-20	20	0,03-0,070	23	29	5,0	0,8	3,5	3,27
JUM-02-25	25	0,03-0,070	28	39	5,0	0,8	4,0	5,75
JUM-02-30	30	0,04-0,085	34	49	5,0	0,8	4,0	11,28
JUM-02-40	40	0,04-0,085	44	59	6,0	1,3	5,0	17,94
JUM-02-45	45	0,04-0,085	50	59	7,0	1,3	6,0	27,00
JUM-02-50	50	0,05-0,100	55	69	7,0	1,3	6,0	32,56

## Installation Drawings Dimensions [mm]

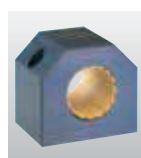
Part No.	Shaft [mm]	d <sub>i</sub> [mm]	B [mm]	r [mm]	t [mm]	f [mm]	z [mm]
	∅	H7	h10	+0,05	+0,1	+0,5	+0,2
JUM-02-10	10	12	26	3,0	1,0	1,0	2,6
JUM-02-12	12	14	28	3,0	1,0	1,5	3,1
JUM-02-16	16	18	30	3,5	1,0	1,7	3,6
JUM-02-20	20	23	30	5,0	1,0	2,0	3,6
JUM-02-25	25	28	40	5,0	1,0	2,0	4,1
JUM-02-30	30	34	50	5,0	1,0	2,0	4,1
JUM-02-40	40	44	60	6,0	1,5	2,5	5,1
JUM-02-45	45	50	60	7,0	1,5	2,5	6,1
JUM-02-50	50	55	70	7,0	1,5	2,5	6,1



Liners of the series JUM-02 are used in:



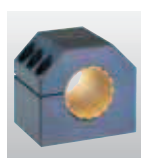
RJUM-02:  
► P. 64.21



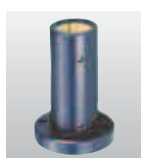
RJUM-05:  
► P. 64.23



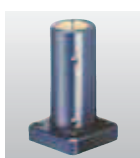
TJUM-05:  
► P. 64.25



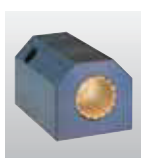
RJUME-05:  
► P. 64.24



FJUMT-01:  
► P. 64.36



FJUMT-02:  
► P. 64.36



RJUMT-05:  
► P. 64.26

Internet [www.igus.de](http://www.igus.de)  
E-mail [info@igus.de](mailto:info@igus.de)