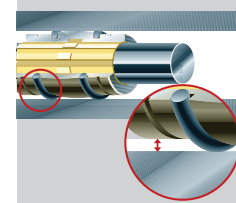
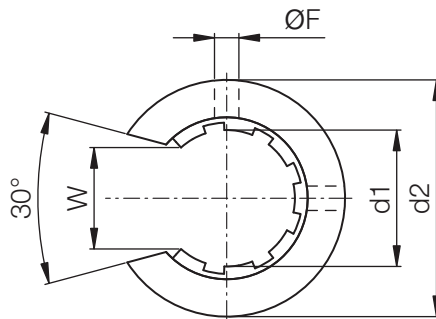
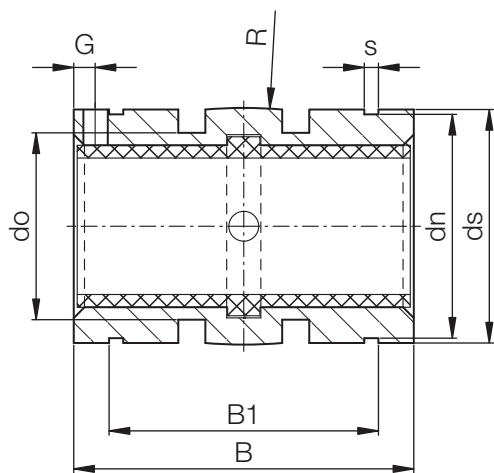




Special properties:

- Open aluminium housing with reduced outer diameter
 - Spherical area on the outer diameter for self-aligning purposes
 - O-rings for elastic seating
 - Hard anodized
- Dimensions otherwise equivalent to the standard for recirculating ball bearings
- Equipped with JUIO liner
- Recommended housing bore H7
- Recommended tolerance for the shaft: h6 - h7
- Secure bearing with set screws (not included in delivery)



Dimensions [Inch]

Part No.	Ø Shaft [inch]	Tolerance* [inch]	d2 [inch]	ds [inch]	F [inch]	G [inch]	do [inch]	B1 [inch]	s [inch]	dn [inch]	B [inch]	W [inch]
			h8	h10	+0,004	+0,004		h10	H10	h10	h10	+0,012
OJUI-03-08	1/2	,0016- ,0032	,8673	,8556	,1360	,6250	,6846	,9870	,0520	,8200	1,2461	,3940
OJUI-03-10	5/8	,0016- ,0032	1,1173	1,1055	,1360	,1250	,9346	1,1360	,0620	1,0600	1,4961	,4330
OJUI-03-12	3/4	,0016- ,0032	1,2421	1,2300	,1360	,1250	1,0590	1,1980	,0620	1,1770	1,6173	,4920
OJUI-03-16	1	,0016- ,0032	1,5547	1,5271	,1360	,1250	1,3720	1,7890	,0740	1,4710	2,2421	,6300
OJUI-03-20	1-1/4	,0020- ,0041	1,9881	1,9606	,2010	,1875	1,8094	2,0390	,0740	1,8890	2,6173	,7090
OJUI-03-24	1-1/2	,0020- ,0041	2,3634	2,3358	,2010	,1875	2,1130	2,4630	,0950	2,2410	2,9921	,8660
OJUI-03-32	2	,0024- ,0051	2,988	2,9606	,2650	,3125	2,7378	3,2490	,1110	2,8390	3,9921	1,1810

* According to igus® testing method ► Page 64.37

DryLin® R

Inch

Phone +49 - 22 03 - 96 49-145
Fax +49 - 22 03 - 96 49-334

