

Structure – part no.
O J U M - 0 6 - 1 2



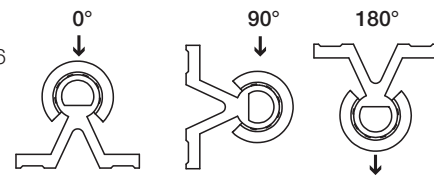
Special properties

- Open pillow block made of anodized aluminium, for supported shafts
- Liner JUMO-01 made of iglidur® J is fitted as standard
- Recommended tolerance for the shaft: h6–h10 (see igus® supported shafts ► **Page 65.3**)
- Also available with following liners:
 - XUMO-01: for high temperatures, material iglidur® X – Example: OXUM-06-16
 - JUMO-11: with reduced maximum clearance, material iglidur® J – Example: OJUM-16-16

* According to igus® testing method

► **Page 64.37**

Available from stock



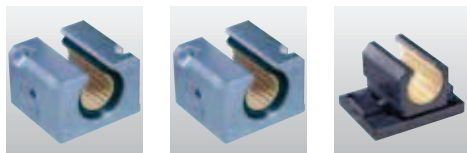
Inner Diameter, Load Capacity and Weight

Part No.	Shaft Ø [mm]	Tolerance* Bearing Inner Diameter [mm]	pmax. [N] Dynamic Load P = 5 MPa			pmax. [N] Static Load P = 35 MPa			Weight [kg]
			0°	90°	180°	0°	90°	180°	
			Standard Pillow Block						
OJUM-06-12	12	0,030 - 0,088	960	635	240	6720	4445	1680	0,095
OJUM-06-16	16	0,030 - 0,088	1440	990	396	10080	6943	2772	0,158
OJUM-06-20	20	0,030 - 0,091	2250	1800	900	15750	12600	6300	0,266
OJUM-06-25	25	0,030 - 0,091	3625	2953	1523	25375	20670	10658	0,530
OJUM-06-30	30	0,040 - 0,110	5100	4250	2278	35700	29735	15946	0,818
OJUM-06-40	40	0,040 - 0,115	8000	6810	3800	56000	47660	26600	1,485
OJUM-06-50	50	0,050 - 0,130	12500	10750	6125	87500	75265	42875	2,750

Dimensions [mm]

Part No.	d1 [mm]	H [mm]	H1 [mm]	A [mm]	M [mm]	E1 [mm]	E2 [mm]	S [mm]	S1	S2 [mm]	N1 [mm]	N2 [mm]	W [mm]	α [°]	L [mm]
Standard Pillow Block		+0,01 -0,014				±0,15	±0,15						-1		
OJUM-06-12	12	18	28	43	21,5	32	23	8,0	M 5	4,3	16,5	11	10,2	78	39
OJUM-06-16	16	22	35	53	26,5	40	26	10,0	M 6	5,3	21,0	13	11,6	78	43
OJUM-06-20	20	25	42	60	30,0	45	32	11,0	M 8	6,6	24,0	18	12,0	60	54
OJUM-06-25	25	30	51	78	39,0	60	40	15,0	M10	8,4	29,0	22	14,5	60	67
OJUM-06-30	30	35	60	87	43,5	68	45	15,0	M10	8,4	34,0	22	16,6	57	79
OJUM-06-40	40	45	77	108	54,0	86	58	18,0	M12	10,5	44,0	26	21,0	56	91
OJUM-06-50	50	50	88	132	66,0	108	50	20,0	M16	13,5	49,0	34	25,5	54	113

Plain bearings of series OJUM-06 can be combined with:



OGA-01: ► P. 64.43
OGA-03: ► P. 64.43
OJUM-06 LL: ► P. 64.33



DryLin® R

mm

Phone +49 - 22 03 - 96 49-145
Fax +49 - 22 03 - 96 49-334

