



mm

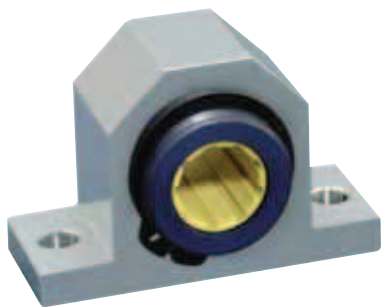
DryLin® R

Phone +49 - 22 03 - 96 49-145  
 Fax +49 - 22 03 - 96 49-334

igus® GmbH  
 51147 Cologne

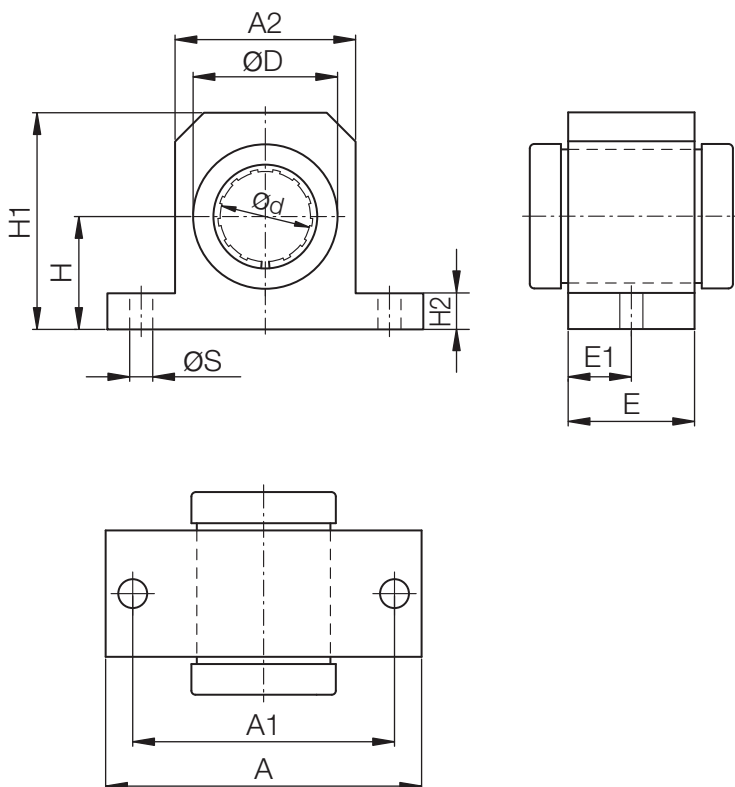
Internet [www.igus.de](http://www.igus.de)  
 E-mail [info@igus.de](mailto:info@igus.de)

64.44



Special properties

- Housing: aluminium
- Equipped with DryLin® R linear plain bearings, part no. RJUM-01-ø or RJUM-03-ø
- Can be combined with DryLin® R housing bearing RJUM-06-ø
- The bearing of the housing is secured using DIN 472 circlips
- Design styles:
  - Standard: RGAS-01-Ø
  - Self-aligning: RGAS-03-Ø
  - All polymer bearing (low cost, low weight): RGAS-04-Ø
- Recommended tolerance for the shaft: h6 - h10 (see igus® shafts p. 64.44)
- Available from stock



Dimensions [mm]

| Part No.              | Self-aligning | All Polymer Bearing | d    | D    | H    | H1   | H2   | A    | A1   | A2   | E    | E1   | S    |
|-----------------------|---------------|---------------------|------|------|------|------|------|------|------|------|------|------|------|
| Standard with RJUM-01 | with RJUM-03  | with RJM-01         | [mm] | [mm] | [mm] | [mm] | [mm] | [mm] | [mm] | [mm] | [mm] | [mm] | [mm] |
| RGAS-01-12            | RGAS-03-12    | RGAS-04-12          | 12   | 22   | 18   | 35   | 6    | 52   | 42   | 30   | 20   | 10   | 5,3  |
| RGAS-01-16            | RGAS-03-16    | RGAS-04-16          | 16   | 26   | 22   | 40,5 | 7    | 56   | 46   | 34   | 22   | 11   | 5,3  |
| RGAS-01-20            | RGAS-03-20    | RGAS-04-20          | 20   | 32   | 25   | 48,0 | 8    | 70   | 58   | 40   | 28   | 14   | 6,4  |
| RGAS-01-25            | RGAS-03-25    | RGAS-04-25          | 25   | 40   | 30   | 58,0 | 10   | 80   | 68   | 50   | 40   | 20   | 6,4  |
| RGAS-01-30            | RGAS-03-30    | RGAS-04-30          | 30   | 47   | 35   | 67,0 | 10   | 88   | 76   | 58   | 48   | 24   | 6,4  |
| RGAS-01-40            | RGAS-03-40    | RGAS-04-40          | 40   | 62   | 45   | 85,0 | 12   | 108  | 94   | 74   | 56   | 28   | 8,4  |