



Inch

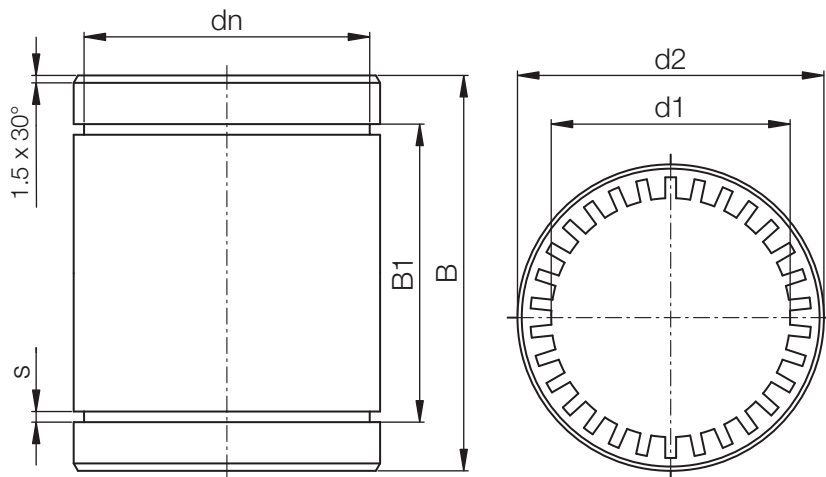
DryLin® R



Special properties:

- Plain bearing made of iglidur® J (further information about iglidur® J properties on ► Chapter 3)
- Dimensions correspond to standard recirculating ball bearings
- Recommended housing bore (d2) H7
- Press fit assembly
- Recommended tolerance for the shaft: h6 – h10
- Secured by circlips according to DIN 471 or 472 (not included in delivery)

Phone +49 - 22 03 - 96 49-145
 Fax +49 - 22 03 - 96 49-334



Inner Diameter, Load Capacity and Weight

Part No.	Shaft Ø [inch]	Tolerance* Bearing Inner Diameter [inch]	pmax. [N] Dynamic Load P = 2.5 MPa	pmax. [N] Static Load P = 17.5 MPa	Weight [g]
RJI-01-06	3/8	0,0010 - 0,0024	265	1855	3,0
RJI-01-08	1/2	0,0013 - 0,0030	505	3535	8,8
RJI-01-10	5/8	0,0013 - 0,0030	755	5285	17,4
RJI-01-12	3/4	0,0016 - 0,0036	982	6877	22,2
RJI-01-16	1	0,0016 - 0,0036	1815	12705	42,5
RJI-01-20	1-1/4	0,0020 - 0,0044	2645	18515	81,1
RJI-01-24	1-1/2	0,0020 - 0,0044	3630	25410	127,1
RJI-01-32	2	0,0024 - 0,0053	6452	45167	249,0

Dimensions [Inch]

Part No.	d1 [inch]	d2 [inch]	B [inch]	B1 [inch]	s [inch]	dn [inch]
RJI-01-06	3/8	0,6250	0,8750	0,6890	0,0410	0,5870
RJI-01-08	1/2	0,8750	1,2500	1,0125	0,0480	0,8200
RJI-01-10	5/8	1,1250	1,5000	1,0950	0,0580	1,0600
RJI-01-12	3/4	1,2500	1,6250	1,2500	0,0580	1,1770
RJI-01-16	1	1,5625	2,2500	1,8640	0,0700	1,4710
RJI-01-20	1-1/4	2,0000	2,6250	1,9840	0,0700	1,8890
RJI-01-24	1-1/2	2,3750	3,0000	2,3900	0,0890	2,2410
RJI-01-32	2	3,0000	4,0000	3,1630	0,1050	2,8390

* According to igus® testing method ► Page 64.37

Internet www.igus.de
 E-mail info@igus.de