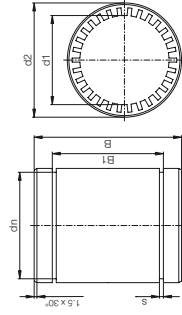


drylin® R Solid Plastic Bearing | Product Range | Inch

Standard type, precise



RJJI-01-06



Diameter
Standard
Inch
Material iglidur® J
Closed



Order key

- Dimensions equivalent to the standard for recirculating ball bearings

- * according to igus® testing method ▶ page 1035
Please note: Installation instructions ▶ page 983

Technical Data [Inch]

Part number	Shaft Ø	Tolerance* bearing inner diame- ter	F max. dynamic** P = 2.5 MPa	F max. static** P = 17.5 MPa
RJJI-01-06	3/8	+0.0010 +0.0024	265	1,855
RJJI-01-08	1/2	+0.0013 +0.0030	505	3,535
RJJI-01-10	5/8	+0.0013 +0.0030	755	5,285
RJJI-01-12	3/4	+0.0016 +0.0036	982	6,877
RJJI-01-16	1	+0.0016 +0.0036	1,815	12,705
RJJI-01-20	1 1/4	+0.0020 +0.0044	2,645	18,515
RJJI-01-24	1 1/2	+0.0020 +0.0044	3,630	25,410
RJJI-01-32	2	+0.0024 +0.0053	6,452	45,167

Dimensions [Inch]

Part number	d1	d2	B	B1	s	dn
RJJI-01-06	3/8	0.6250	0.8750	0.6890	0.0410	0.5870
RJJI-01-08	1/2	0.8750	1.2500	1.0125	0.0480	0.8200
RJJI-01-10	5/8	1.1250	1.5000	1.0950	0.0580	1.0600
RJJI-01-12	3/4	1.2500	1.6250	1.2500	0.0580	1.1770
RJJI-01-16	1	1.5625	2.2500	1.8640	0.0700	1.4710
RJJI-01-20	1 1/4	2.0000	2.6250	1.9840	0.0700	1.8890
RJJI-01-24	1 1/2	2.3750	3.0000	2.3900	0.0890	2.2410
RJJI-01-32	2	3.0000	4.0000	3.1630	0.1050	2.8390



delivery from stock

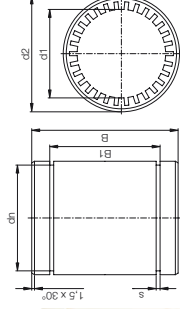


prices price list online

www.igus.co.uk/en/drylinR

drylin® R Solid Plastic Bearing | Product Range | Inch

Standard type, precise



RJIP-01-04



Diameter
Standard
Precise
Inch
Material iglidur® J
Closed



Order key

- Dimensions equivalent to the standard for recirculating ball bearings

- * according to igus® testing method ▶ page 1035
Please note: Installation instructions ▶ page 983

Technical Data [Inch]

Part number	Shaft Ø	Tolerance* bearing inner diame- ter	F max. dynamic** P = 2.5 MPa	F max. static** P = 17.5 MPa
RJIP-01-04	1/4	+0.0000 +0.0014	180	1,267
RJIP-01-06	3/8	+0.0000 +0.0014	265	1,855
RJIP-01-08	1/2	+0.0000 +0.0017	505	3,535
RJIP-01-10	5/8	+0.0000 +0.0017	755	5,285
RJIP-01-12	3/4	+0.0000 +0.0020	982	6,877
RJIP-01-16	1	+0.0000 +0.0020	1,815	12,705
RJIP-01-20	1 1/4	+0.0000 +0.0024	2,645	18,515

Dimensions [Inch]

Part number	d1	d2	B	B1	s	dn
RJIP-01-04	1/4	0.4999	0.74803	0.5188	0.0409	0.4669
RJIP-01-06	3/8	0.6250	0.8750	0.6890	0.0410	0.5870
RJIP-01-08	1/2	0.8750	1.2500	1.0125	0.0480	0.8200
RJIP-01-10	5/8	1.1250	1.5000	1.0950	0.0580	1.0600
RJIP-01-12	3/4	1.2500	1.6250	1.2500	0.0580	1.1770
RJIP-01-16	1	1.5625	2.2500	1.8640	0.0700	1.4710
RJIP-01-20	1 1/4	2.0000	2.6250	1.9840	0.0700	1.8890



delivery from stock



prices price list online

www.igus.co.uk/en/drylinR