

Structure – part no.
R J M-01-08



Special properties

- Bearing made of iglidur® J
- Dimensions corresponding to the standard for recirculating ball bearings
- Recommended housing bore (d2) H7
- Installation by force fitting
- Recommended tolerance for the shaft: h6-h10
- Fastening through pressfit or with circlips according to DIN 471 and/or 472 (not included in the delivery)
- The E9 inner tolerance ensues only after the press fit

* According to igus® testing method
▶ **Page 64.37**

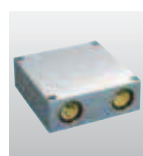
Available from stock

Inner Diameter, Load Capacity and Weight

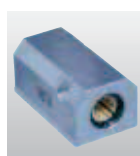
Part No.	Shaft Ø [mm]	Tolerance* for d1 E9 [mm]	pmax. [N] Dynamic Load P = 2,5 MPa	pmax. [N] Static Load P = 17,5 MPa	Weight [g]	Press fit Insertion Force [N]
RJM-01-08	8	0,025 - 0,061	250	1750	4	400
RJM-01-10	10	0,032 - 0,075	363	2538	7	700
RJM-01-12	12	0,032 - 0,075	480	3360	9	1300
RJM-01-16	16	0,032 - 0,075	720	5040	13	1100
RJM-01-20	20	0,040 - 0,092	1125	7875	24	1500
RJM-01-25	25	0,040 - 0,092	1813	12688	47	3500
RJM-01-30	30	0,040 - 0,092	2550	17850	72	4500
RJM-01-40	40	0,050 - 0,112	4000	28000	127	4200
RJM-01-50	50	0,060 - 0,134	6250	43750	242	5100

Dimensions [mm]

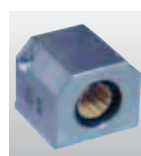
Part No.	d1 [mm]	d2 [mm]	B [mm]	B1 [mm]	s [mm]	dn [mm]
RJM-01-08	8	16	25	16,2	1,10	15,2
RJM-01-10	10	19	29	21,6	1,30	17,5
RJM-01-12	12	22	32	22,6	1,30	20,5
RJM-01-16	16	26	36	24,6	1,30	24,2
RJM-01-20	20	32	45	31,2	1,60	29,6
RJM-01-25	25	40	58	43,7	1,85	36,5
RJM-01-30	30	47	68	51,7	1,85	43,5
RJM-01-40	40	62	80	60,3	2,15	57,8
RJM-01-50	50	75	100	77,3	2,65	70,5



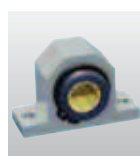
RQA-04:
▶ P. 64.38



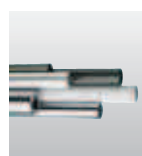
RTA-04:
▶ P. 64.40



RGA-04:
▶ P. 64.42



RGAS-04:
▶ P. 64.44



shafts:
▶ Chapter 65



DryLin® R

mm

Phone +49 - 22 03 - 96 49-145

Fax +49 - 22 03 - 96 49-334

