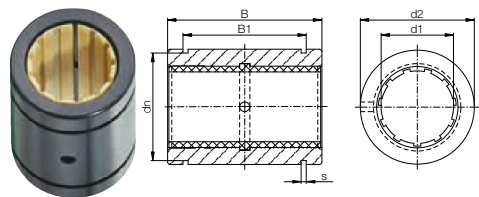


Closed, anodised aluminium adapter



Order key



Type	Size
<b>R J U M-01-10</b>	
Closed	
igidur® J	
Liner	
Metric	
Standard	
Diameter	

<sup>78)</sup> According to igus® testing method ► Page 924<sup>81)</sup> Ø < 10 mm use iglidur® JSM sleeve bearings<sup>82)</sup> Design standards ► Page 878

Please note: Installation instructions ► Page 879

- Dimension equivalent to the standard for recirculating ball bearings
- JUM-01 liner made from iglidur® J

## Technical Data

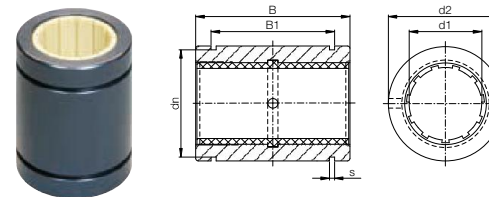
Part No.	d1-Tolerance <sup>78)</sup>	F max. dynamic <sup>82)</sup>	F max. static <sup>82)</sup>	Weight
	[mm]	P = 5 MPa [N]	P = 35 MPa [N]	
RJZM-01-05 <sup>81)</sup>	+0.025 +0.060	525	3,675	5
RJZM-01-06 <sup>81)</sup>	+0.025 +0.060	525	3,675	5
RJZM-01-08 <sup>81)</sup>	+0.032 +0.070	960	6,720	9
RJUM-01-10	+0.030 +0.088	725	5,075	14
RJUM-01-12	+0.030 +0.088	960	6,720	21
RJUM-01-16	+0.030 +0.088	1,440	10,080	28
RJUM-01-20	+0.030 +0.091	2,250	15,750	49
RJUM-01-25	+0.030 +0.091	3,625	25,375	108
RJUM-01-30	+0.040 +0.110	5,100	35,700	162
RJUM-01-40	+0.040 +0.115	8,000	56,000	334
RJUM-01-50	+0.050 +0.130	9,000	87,500	579
RJUM-01-60	+0.050 +0.140	12,000	120,000	1,070

## Dimensions [mm]

Part No.	d1	d2	B	B1	s	dn
		h7	h10	H10	H10	h10
RJZM-01-05 <sup>81)</sup>	5	12	22	14.2	1.10	11.5
RJZM-01-06 <sup>81)</sup>	6	12	22	14.2	1.10	11.5
RJZM-01-08 <sup>81)</sup>	8	16	25	16.2	1.10	15.2
RJUM-01-10	10	19	29	21.6	1.30	17.5
RJUM-01-12	12	22	32	22.6	1.30	20.5
RJUM-01-16	16	26	36	24.6	1.30	24.2
RJUM-01-20	20	32	45	31.2	1.60	29.6
RJUM-01-25	25	40	58	43.7	1.85	36.5
RJUM-01-30	30	47	68	51.7	1.85	43.5
RJUM-01-40	40	62	80	60.3	2.15	57.8
RJUM-01-50	50	75	100	77.3	2.65	70.5
RJUM-01-60	60	90	125	101.7	3.15	86.5

Closed anodised aluminium adapter,  
precise

Order key



Type	Size
<b>R J U M-11-10</b>	
Closed	
igidur® J	
Liner	
Metric	
Precise	
Diameter	

<sup>78)</sup> According to igus® testing method ► Page 924<sup>82)</sup> Design standards ► Page 878

Please note: Installation instructions ► Page 879

- Dimension equivalent to the standard for recirculating ball bearings
- Max. bearing clearance reduced by 50 % compared to RJUM-01

## Technical Data

Part No.	d1-Tolerance <sup>78)</sup>	F max. dynamic <sup>82)</sup>	F max. static	Weight
	[mm]	P = 5 MPa [N]	P = 35 MPa [N]	
RJUM-11-10	+0.000 +0.058	725	5,075	14
RJUM-11-12	+0.000 +0.058	960	6,720	21
RJUM-11-16	+0.000 +0.058	1,440	10,080	28
RJUM-11-20	+0.000 +0.061	2,250	15,750	49
RJUM-11-25	+0.000 +0.061	3,625	25,375	108
RJUM-11-30	+0.000 +0.075	5,100	35,700	162
RJUM-11-40	+0.000 +0.080	8,000	56,000	334
RJUM-11-50	+0.000 +0.090	12,500	87,500	579

## Dimensions [mm]

Part No.	d1	d2	B	B1	s	dn
		h7	h10	H10	H10	h10
RJUM-11-10	10	19	29	21.6	1.30	17.5
RJUM-11-12	12	22	32	22.6	1.30	20.5
RJUM-11-16	16	26	36	24.6	1.30	24.2
RJUM-11-20	20	32	45	31.2	1.60	29.6
RJUM-11-25	25	40	58	43.7	1.85	36.5
RJUM-11-30	30	47	68	51.7	1.85	43.5
RJUM-11-40	40	62	80	60.3	2.15	57.8
RJUM-11-50	50	75	100	77.3	2.65	70.5

Can be combined with:



RQA-01



RTA-01



RGA-01



RGAS-01



XUM-01



E7UM-01

RJUM-01 ► Page 998 and RJUM-11 also available with liners: