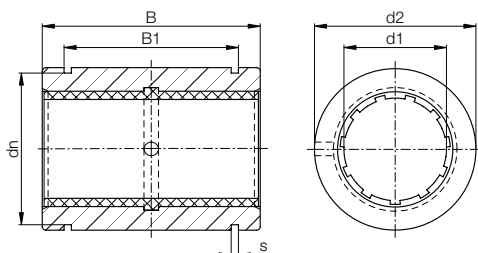


drylin® R Linear Plain Bearing | Product Range

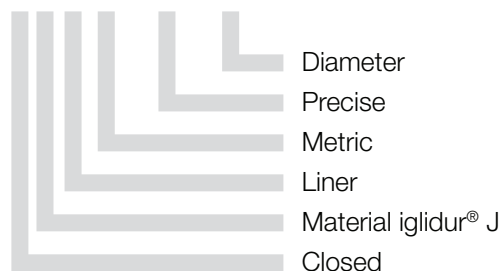
Closed anodized aluminum adapter, precise



Order key



RJUM-11-10



- Dimension equivalent to the standard for recirculating ball bearings
- Max. bearing clearance reduced by 50 % compared to RJUM-01



* according to igus® testing method ► page 925

** construction standards ► page 926

Please note: Installation instructions ► page 877

Technical Data

Part number	Shaft	Tolerance* bearing inner diameter	F max. dynamic**	F max. static**	Weight
	Ø		P = 5 MPa	P = 35 MPa	
	[mm]	[mm]	[N]	[N]	[g]
RJUM-11-10	10	+0.000 +0.058	725	5,075	14
RJUM-11-12	12	+0.000 +0.058	960	6,720	21
RJUM-11-16	16	+0.000 +0.058	1,440	10,080	28
RJUM-11-20	20	+0.000 +0.061	2,250	15,750	49
RJUM-11-25	25	+0.000 +0.061	3,625	25,375	108
RJUM-11-30	30	+0.000 +0.075	5,100	35,700	162
RJUM-11-40	40	+0.000 +0.080	8,000	56,000	334
RJUM-11-50	50	+0.000 +0.090	12,500	87,500	579

Dimensions [mm]

Part number	d1	d2	B	B1	s	dn
		h7	h10	H10	H10	h10
RJUM-11-10	10	19	29	21.6	1.30	17.5
RJUM-11-12	12	22	32	22.6	1.30	20.5
RJUM-11-16	16	26	36	24.6	1.30	24.2
RJUM-11-20	20	32	45	31.2	1.60	29.6
RJUM-11-25	25	40	58	43.7	1.85	36.5
RJUM-11-30	30	47	68	51.7	1.85	43.5
RJUM-11-40	40	62	80	60.3	2.15	57.8
RJUM-11-50	50	75	100	77.3	2.65	70.5

Can be combined with:



RQA-01



RTA-01



RGA-01



RGAS-01



XUM-01

RJUM-01 ► page 888 and RJUM-11 also available with liners:

delivery from stock
time

prices price list online
www.igus.eu/eu/drylinR