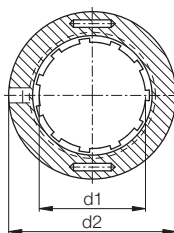
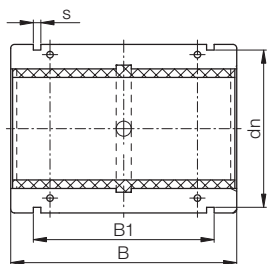




DryLin® R | Split Linear Bearing TJUM-01 | mm



Structure – part no.
T J U M - 01-10



mm

DryLin® R

Special properties

- Split, anodized aluminium housing
- Dimensions equivalent to standard recirculating ball bearings
- Fitted as standard with iglidur® J liners (Standard)
- Recommended housing bore H7
- Recommended tolerance for the shaft: h6–h10 (see igus® shafts ► **chapter 65**)
- Secured by DIN 471 or 472 circlips (not included in delivery)
- Also available with following liners:
 - JUM-11: with reduced maximum bearing clearance material iglidur® J – Example: TJUM-11-16

* According to igus® testing method

► **Page 64.37**

Available from stock



Phone +49 - 22 03 - 96 49-145
Fax +49 - 22 03 - 96 49-334

igus® GmbH
51147 Cologne

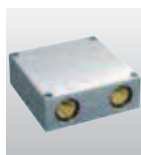
Inner Diameter, Load Capacity and Weight

Part No.	Shaft Ø [mm]	Tolerance* Bearing Inner Diameter [mm]	pmax. [N] Dynamic Load P = 5 MPa	pmax. [N] Static Load P = 35 MPa	Weight [g]
TJUM-01-10	10	0,030 - 0,092	725	5075	14
TJUM-01-12	12	0,030 - 0,097	960	6720	19
TJUM-01-16	16	0,030 - 0,097	1440	10080	27
TJUM-01-20	20	0,030 - 0,103	2250	15750	49
TJUM-01-25	25	0,030 - 0,103	3625	25375	106
TJUM-01-30	30	0,040 - 0,124	5100	35700	166
TJUM-01-40	40	0,040 - 0,124	8000	56000	347
TJUM-01-50	50	0,050 - 0,146	12500	87500	577

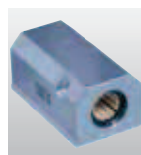
Dimensions [mm]

Part No.	d1 [mm]	d2 [mm]	B [mm]	B1 [mm]	s [mm]	dn [mm]
			h10	H10	H10	
TJUM-01-10	10	19 -0,020-0,040	29	21,6	1,30	17,5
TJUM-01-12	12	22 -0,020-0,040	32	22,6	1,30	20,5
TJUM-01-16	16	26 -0,020-0,040	36	24,6	1,30	24,2
TJUM-01-20	20	32 -0,020-0,045	45	31,2	1,60	29,6
TJUM-01-25	25	40 -0,030-0,055	58	43,7	1,85	36,5
TJUM-01-30	30	47 -0,030-0,055	68	51,7	1,85	43,5
TJUM-01-40	40	62 -0,030-0,060	80	60,3	2,15	57,8
TJUM-01-50	50	75 -0,030-0,060	100	77,3	2,65	70,5

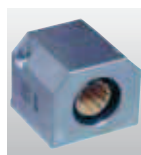
Plain bearings of series TJUM-01 can be combined with:



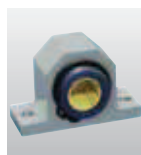
RQA-01:
► P. 64.38



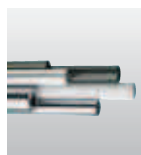
RTA-01:
► P. 64.40



RGA-01:
► P. 64.42



RGAS-01:
► P. 64.44



Shafts:
► Chapter 65

Internet www.igus.de
E-mail info@igus.de

64.18

Lifetime calculation, CAD files and much more support ► www.igus.de/en/DryLinR