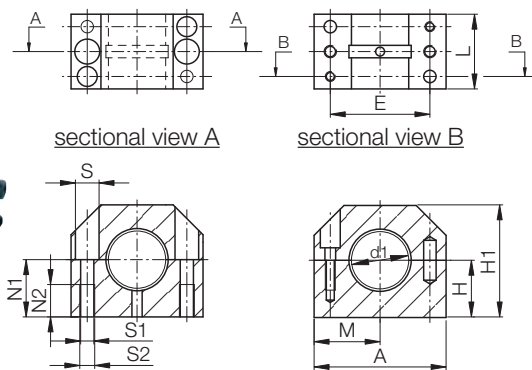
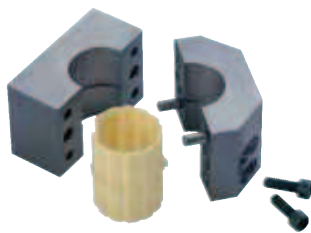


DryLin® R | Split Pillow Block TJUM-05 | mm



Structure – part no.
T J U M - 0 5 - 1 6

- Diameter
- P: block short
- Metric
- Liner
- iglidur® J
- Split



DryLin® R

mm

Special properties

- Split, anodized aluminium housing, short design
- Liner JUM-02 made of iglidur® J
- Fitting the bearing and replacement of the liner is possible without removing the shaft
- Recommended tolerance for the shaft: h6-h10 (see iglus® shafts ► **chapter 65**)
- Also available with following liners:
 - XUM-02: for high temperatures, material iglidur® X – Example: RXUMT-05-16
 - JUM-12: with reduced maximum clearance, material iglidur® J – Example: TJUM-15-16

* According to iglus® testing method

► **Page 64.37**

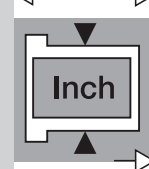
Available from stock

Inner Diameter, Load Capacity and Weight

Part No.	Shaft	Tolerance* Bearing Inner Diameter	pmax. [N] Dynamic Load P = 5 MPa	pmax. [N] Static Load P = 35 MPa	Weight [g]
	Ø [mm]				
TJUM-05-16	16	0,030-0,120	1200	8400	105
TJUM-05-20	20	0,030-0,120	1500	10500	137
TJUM-05-25	25	0,030-0,120	2500	17500	253
TJUM-05-30	30	0,040-0,135	3750	26250	377
TJUM-05-40	40	0,040-0,135	6000	42000	720

Dimensions [mm]

Part No.	d1 [mm]	H [mm]	H1 [mm]	A [mm]	M [mm]	E [mm]	S [mm]	S1	S2 [mm]	N1 [mm]	N2 [mm]	L [mm]
		±0,02				±0,15						
TJUM-05-16	16	19	38	45	22,5	34	8,0	M 5	4,3	18	11	30
TJUM-05-20	20	23	45	53	26,5	40	9,5	M 6	5,3	22	13	30
TJUM-05-25	25	27	54	62	31,0	48	11,0	M 8	6,6	26	18	40
TJUM-05-30	30	30	60	67	33,5	53	11,0	M 8	6,6	29	18	50
TJUM-05-40	40	39	76	87	43,5	69	15,0	M10	8,4	38	22	60



Phone +49 - 22 03 - 96 49-145
Fax +49 - 22 03 - 96 49-334