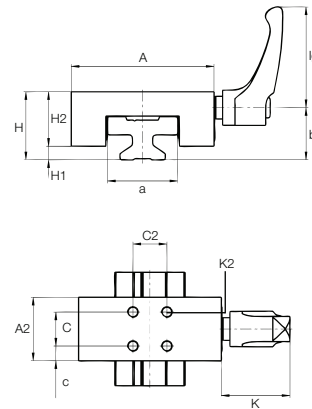


# drylin® T Rail Guide Systems | Product Range

## Clamping Elements and Manual Clamping for quick positioning



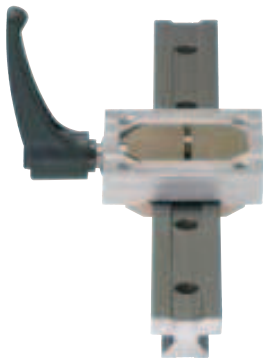
- Compact clamping of high loads, for all sizes (15–30) – holding force up to 500 N
- Pneumatic clamping – (on request)
- Simple assembly



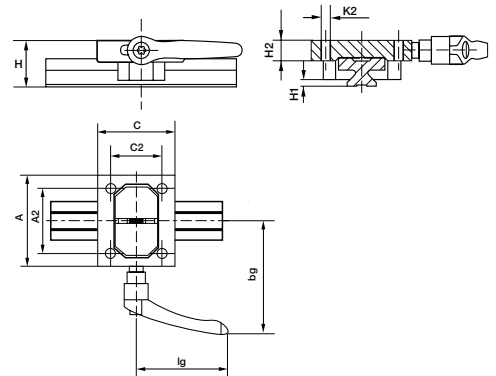
## Clamping Elements for drylin® T Rail Guide Systems – Dimensions [mm]

TWBM-11: narrow design with clamping elements made of plastic

Part number	A	a	A2	H	H1	H2	K	K2	C	C2	c	lg	b
TWBM-11-15	47	22	23	24	4	20	30	M4	15	15	4	44	18.9
TWBM-11-20	63	31	28	30	6	24	30	M5	15	15	6.5	44	23
TWBM-11-25	70	34	35	36	5	31	39	M6	20	20	7.5	63.63	26.2
TWBM-11-30	90	40	38	42	6.5	35.5	47	M6	20	20	9	78	32.4



- Clamping of high loads, up to 500 N per clamp
- Brass clamp elements
- Location bores as TW-01-25
- Removable hands



## drylin® T Manual Clamping – Dimensions [mm]

TWBM-01: solid design with brass clamp elements, location bores as TW-01-25

Part number	A	A2	H	H1	H2	K2	C	C2	lg	bg
TWBM-01-25*	80	57	36	5	16	M8	68	45	80	99

\* Only for guide rails TS-01-25



delivery from stock  
time



prices price list online  
www.igus.eu/eu/drylinT



Order notice ► page 812

TS rails (single)  
TW guide carriages (single)  
TK complete system (TS+TW assembled)