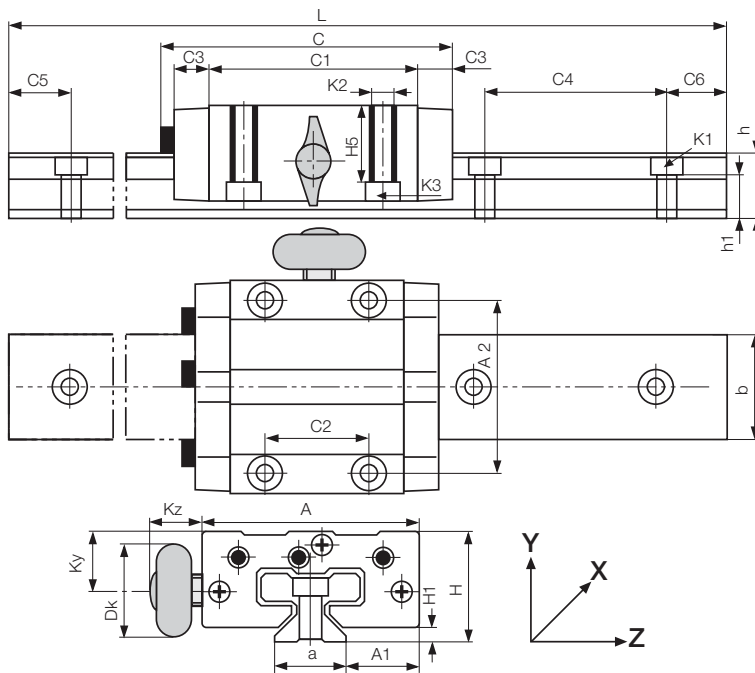


DryLin® T



- With manual clamp
- Slide carriage with manual adjustable clearance
- Maintenance-free, dry operation
- Resistant to corrosion
- Hard anodized aluminium rails
- Standard bore pattern symmetrical C5 = C6

DryLin® T Guide Rails

Part No.	Weight [kg/m]	L [mm]	a [mm]	C4 [mm]	C5		C6		h [mm]	h1 [mm]	K1 for Screw DIN 912 [mm]	b [mm]	ly [mm ²]	lz [mm ²]	Wby [mm ³]	Wbz [mm ³]
					Max.	Min.	Max.	Min.								
TS-01-15	0,6	4000	15	60	20	49	20	49	15,5	10,0	M 4	22	6440	4290	585	488
TS-01-20	1,0	4000	20	60	20	49	20	49	19,0	12,3	M 5	31	22570	11520	1456	1067
TS-01-25	1,3	4000	23	60	20	49	20	49	21,5	13,8	M 6	34	34700	19300	2041	1608
TS-01-30	1,9	4000	28	80	20	59	20	59	26,0	15,8	M 8	40	70040	40780	3502	2832

Order example: TS-01-15, 2000 for a guide rail TS-01-15 of 2 m length
 For rails without mounting holes, please use part number suffix "without mounting hole"

DryLin® T Guide Carriages with Manual Clamping

Part No.	Size	Kz [mm]	Ky [mm]	Dk [mm]	Thread of the Clamp
TW-01-15 HKA	15	19,0	11,5	20,0	M6
TW-01-20 HKA	20	18,0	15,0	28,0	M8
TW-01-25 HKA	25	17,0	19,0	28,0	M8
TW-01-30 HKA	30	20,0	21,5	28,0	M8

More dimensions for the DryLin® TW- Guide Carriage ► [page 61.6](#)
 Order examples: TW-01-20 HKA for a guide carriage with manual clamping
 TW-01-20 HKA, LLy for a carriage with manual clamping and floating bearing in y-direction

DryLin® TK HKA Complete system

Structure – part no.

	TK	-01	-15	-2	,500	HKA
--	----	-----	-----	----	------	-----

- Manual clamping
- Length of rail (mm)
- Number of carriages
- Size
- Type
- Complete set

This order example (TK-01-15-2, 500 HKA) corresponds to a DryLin® T system of size 15 with 2 carriages, 500 mm rail length and manual clamping.
 Order TKA-01-15-2, 500 HKA, LLy for a complete system with manual clamping and floating bearing in y-direction

Phone +49 - 22 03 - 96 49-145
 Fax +49 - 22 03 - 96 49-334

igus® GmbH
 51147 Cologne

Internet www.igus.de
 E-mail info@igus.de