

- J** Hohe Geschwindigkeiten High speed
- W300** Hoch belastbar High load capacity
- J350** Temperaturen bis zu 150 °C
Temperatures up to 150 °C
- A180** FDA-konform FDA-compliant
- R** Günstig Low-cost

Bestellschlüssel
Order key

Typ Type	Abmessungen Dimensions	Gewinde Thread
DST- <input type="checkbox"/> S R M -	22 20	DS 10x2
dryspin® technology	iglidur® -Material wählen Choose iglidur® material	Form S= zylindrisch cylindric
	R = Rechtsgewinde right handed thread	Metrisch metric
	Schlüsselfweite SW Wide across flats	d2
	DS= dryspin® Steilgewinde High helix thread	Ø
		Steigung Pitch

Optionen Options:

- R = Rechtsgewinde Right handed thread
- L = Linksgewinde Left handed thread

- J** Hohe Geschwindigkeiten High speed
- W300** Hoch belastbar High load capacity
- J350** Temperaturen bis zu 150 °C
Temperatures up to 150 °C
- A180** FDA-konform FDA-compliant
- R** Günstig Low-cost

Bestellschlüssel
Order key

Typ Type	Abmessungen Dimensions	Gewinde Thread
DST- <input type="checkbox"/> F R M -	17 22 20	DS 10x2
dryspin® technology	iglidur® -Material wählen Choose iglidur® material	Form F= mit Flansch with flange
	R = Rechtsgewinde right handed thread	Metrisch metric
	Schlüsselfweite SW Wide across flats	d2
	DS= dryspin® Steilgewinde High helix thread	b1
		Ø
		Steigung Pitch

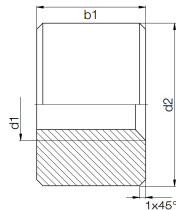
Optionen Options:

- R = Rechtsgewinde Right handed thread
- L = Linksgewinde Left handed thread

..dryspin® Steilgewinde... Vollsortiment ..

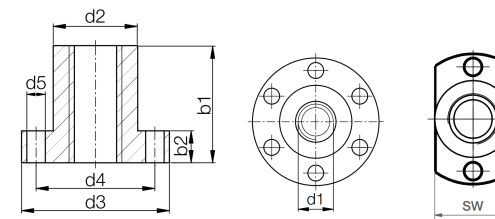
Abmessungen zylindrische Bauform Dimensions cylindrical version [mm]

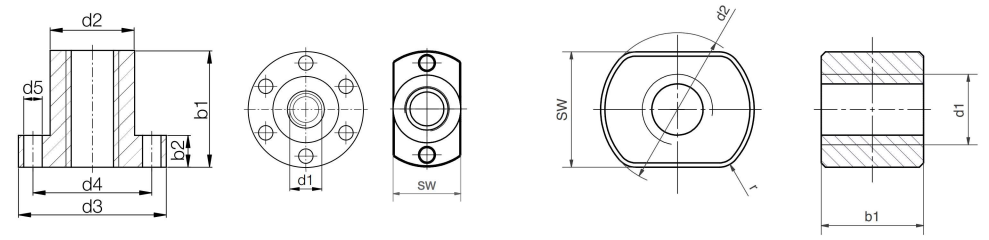
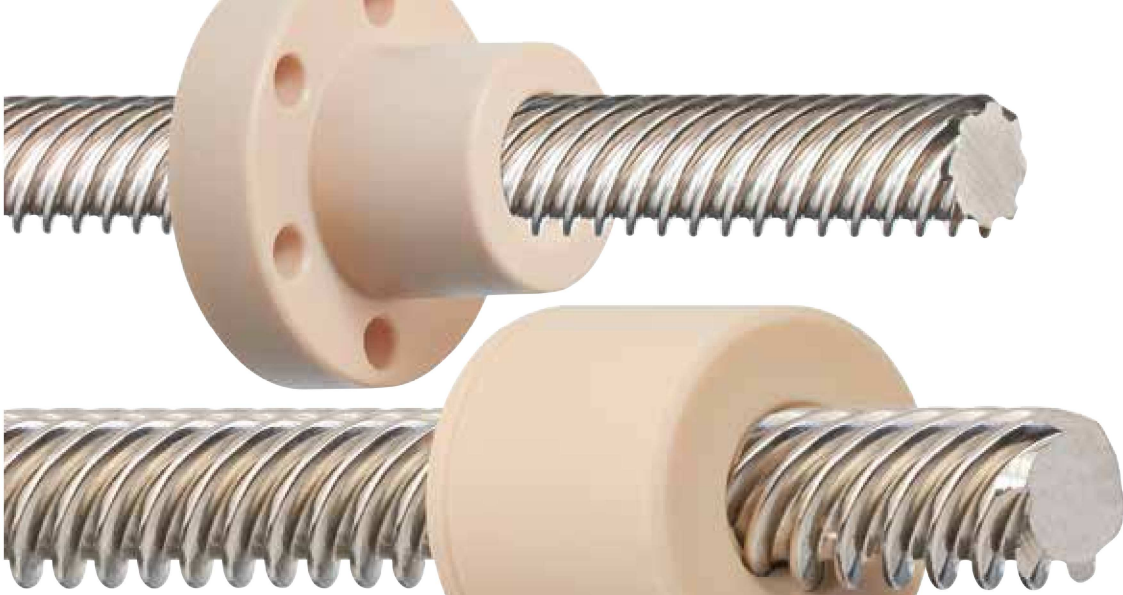
Gewinde Thread	d2	b1	Bestellnummer Part No.
d1 x P			DST- <input type="checkbox"/> SR(L)M- ...
Ds6,35x2,54	14	13	...1413DS6.35X2.54
Ds6,35x5,08	14	13	...1413DS6.35X5.08
Ds6,35x12,7	14	13	...1413DS6.35X12.7
Ds6,35x25,4	14	13	...1413DS6.35X25.4
Ds10x12	22	20	...2220DS10X12
Ds10x25	22	20	...2220DS10X25
Ds10x50	22	20	...2220DS10X50
Ds14x25	30	27	...3027DS14X25
Ds14x30	30	27	...3027DS14X30
Ds16x35	36	32	...3632DS16X35
Ds18x40	40	36	...4036DS18X40
Ds18x80	40	36	...4036DS18X80
Ds20x60	45	40	...4540DS20X60
Ds20x90	45	40	...4540DS20X90



Abmessungen Bauform mit Flansch Dimensions flange version [mm]

Gewinde Thread	d2	d3	d4	d5	b1	b2	SW	Bestellnummer Part No.
d1 x P								DST- <input type="checkbox"/> FR(L)M- ...
Ds6.35x2.54	13	25	19	3,2	15	5	13	...131315DS6.35X2.54
Ds6.35x5.08	13	25	19	3,2	15	5	13	...131315DS6.35X5.08
Ds6.35x25.4	13	25	19	3,2	15	5	13	...131315DS6.35X25.4
Ds10x12	25	42	34	5	25	10	25	...252525DS10X12
Ds10x25	25	42	34	5	25	10	25	...252525DS10X25
Ds10x50	25	42	34	5	25	10	25	...252525DS10X50
Ds14x25	28	48	38	6	35	12	28	...282835DS14X25
Ds14x30	28	48	38	6	35	12	28	...282835DS14X30
Ds18x80	28	48	38	6	35	18	28	...282835DS18X80
Ds18x40	28	48	38	6	35	12	28	...282835DS18X40
Ds16x35	28	48	38	6	35	12	28	...282835DS16X35
Ds20x60	32	55	45	7	44	12	32	...323244DS20X60
Ds20x90	32	55	45	7	44	12	32	...323244DS20X90





Verfügbare Werkstoffe Available materials

- J** Hohe Geschwindigkeiten High speeds
- J350** Temperaturen Temperature bis zu up to +150°C
- R** Günstig cost-effective
- A180** FDA-konform FDA-compliant

www.igus.de/dryspin
www.igus.eu/dryspin

Lieferbar Available
ab Lager from stock

Optionen Options

R = Rechtsgewinde Right-hand thread
L = Linksgewinde Left-hand thread

... 2,5 times more service life ... **2,5-fache Lebensdauer ...**

Schmierfreie dryspin® Effizienz in 9 neuen Größen

Der leise und vibrationsfreie Lauf der igus® Steilgewindemuttern mit dryspin® Technologie beeindruckt auf den ersten Blick. Immer mehr Anwender in unterschiedlichsten Industrien vertrauen auf robuste und langlebige dryspin® Lösungen. Neun weitere Steilgewindeabmessungen mit effizienter dryspin® Technologie erweitern ab sofort das Lieferprogramm. Schmierfreie Gewindemuttern aus dry-tech® Materialien auf Steilgewindespindeln in Edelstahl und Aluminium, mit Rechts- und Linksgewinde.

- 4 langlebige dry-tech® Materialien zur Auswahl
- Leise und vibrationsfrei
- Robust durch Schmutzunempfindlichkeit

Lubrication-free dryspin® efficiency in 9 new sizes

The quiet and vibration-free operation of the igus® lead screw nuts with dryspin® technology makes an immediate impression. More and more users in very different industries are placing their trust in robust and long-lasting dryspin® solutions. New additional high-helix thread dimensions with efficient dryspin® technology can now be supplied. Lubrication-free lead screw nuts made of dry-tech® materials on high-helix lead screws made of stainless steel and aluminium, with right-hand and left-hand thread.

- Choice of 4 dry-tech® materials with long service life
- Quiet and vibration-free
- Robust due to insensitivity to dirt

Art.-Nr. Part No.	Gewinde Thread	d1 x P	d3	Steigung Pitch P	Max. Länge Max. length
DST-LS-8X15-L-ES	Ds8x15	8	15,0	3.000	
DST-LS-10X12-L-ES	Ds10x12	10	12,0	3.000	
DST-LS-12X5-R-ES	Ds12x5	12	5,0	3.000	
DST-LS-12X25-R-ES	Ds12x25	12	25,0	3.000	
DST-LS-14X25-L-ES	Ds14x25	14	25,0	3.000	
DST-LS-14X40.6-R-ES	Ds14x40,6	14	40,6	3.000	
DST-LS-18X24-R-ES	Ds18x24	18	24,0	3.000	
DST-LS-20X80-R-ES	Ds20x80	20	80,0	3.000	
DST-LS-20X90-L-ES	Ds20x90	20	90,0	3.000	

Abmessungen Gewindemuttern Dimensions lead screws [mm]

Art.-Nr. Part No.	Gewinde Thread	d2	d3	d4	d5	b1	b2	SW	Flächen-tragenteil Effective supporting surfaces [mm²]	max.stat. F axial Max.stat. F axial [N]
DST-□... d1 x P										
Mit Flansch With flange – optional mit Schlüsselfläche optional with spanner flat [SW]										
...FLM-202020DS8X15	Ds8x15	20	36	28	4	20	8	20	205	512,5
...FLM-252525DS10X12	Ds10x12	25	42	34	5	25	10	25	343	857,5
...FRM-282835DS12X5	Ds12x5	28	48	38	6	35	12	28	581	1.452,5
...FRM-282835DS12X25	Ds12x25	28	48	38	6	35	12	28	562	1.405,0
...FLM-282835DS14X25	Ds14x25	28	48	38	6	35	12	28	576	1.440,0
...FRM-282835DS14X40.6	Ds14x40,6	28	48	38	6	35	12	28	562	1.417,5
...FRM-282835DS18X24	Ds18x24	28	48	38	6	35	18	28	821	2.053,0
...FRM-323244DS20X80	Ds20x80	32	55	45	7	44	12	32	755	1.887,5
...FLM-323244DS20X90	Ds20x90	32	55	45	7	44	12	32	671	1.677,5
Zylindrisch Cylindrical										
...SLM-1812DS8X15	Ds8x15	18	-	-	-	12	-	-	123	307,5
...SLM-2220DS10X12	Ds10x12	22	-	-	-	20	-	-	274	685,0
...SRM-2624DS12X5	Ds12x5	26	-	-	-	24	-	-	398	995,0
...SRM-2624DS12X25	Ds12x25	26	-	-	-	24	-	-	385	963,0
...SLM-3027DS14X25	Ds14x25	30	-	-	-	27	-	-	444	1.110,0
...SRM-3027DS14X40.6	Ds14x40,6	30	-	-	-	27	-	-	434	1.095,0
...SRM-4036DS18X24	Ds18x24	40	-	-	-	36	-	-	844	2.110,0
...SRM-4540DS20X80	Ds20x80	45	-	-	-	40	-	-	686	1.715,0
...SLM-4540DS20X90	Ds20x90	45	-	-	-	40	-	-	610	1.525,0