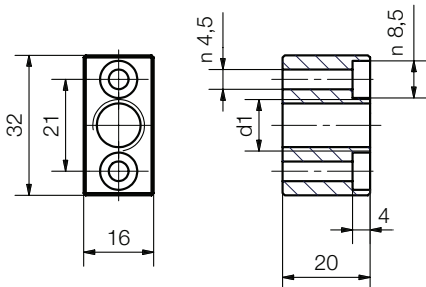


The lead screw nuts are in use in our SHT linear modules ► [page 1007](#)

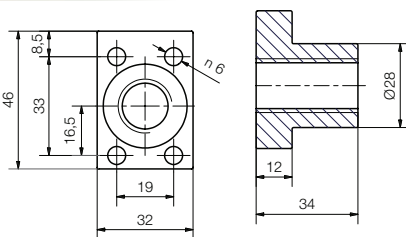
## Square lead screw nuts



### Dimensions [mm]

Part number	Thread	Hand of rotation	from SHT Linear module
SHT-1210-TRM10x2	TR10x2	right	SHT-12 ► <a href="#">page 1024</a>
SHT-1210-TRM10x2-L	TR10x2	left	SHT-12 ► <a href="#">page 1024</a>
SHT-1210-TRM10x3	TR10x3	right	SHT-12 ► <a href="#">page 1024</a>
SHT-1210-TRM10x3-L	TR10x3	left	SHT-12 ► <a href="#">page 1024</a>
SHT-1210-SM10x12	SG10x12	right	SHTS-12 ► <a href="#">page 1028</a>
SHT-1210-SM10x12-L	SG10x12	left	SHTS-12 ► <a href="#">page 1028</a>
SHT-1210-SM10x50	SG10x50	right	SHTS-12 ► <a href="#">page 1028</a>
SHT-1210-SM10x50-L	SG10x50	left	SHTS-12 ► <a href="#">page 1028</a>

## Lead screw nuts with flange

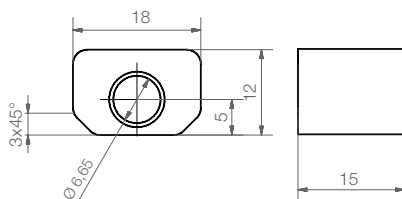


### Dimensions [mm]

Part number	Thread	Hand of rotation	from SHT Linear module
SHT-2018-SM18x100	SG18x100	right	SHTS-20 ► <a href="#">page 1028</a>
SHT-2018-SM18x100-L	SG18x100	left	SHTS-20 ► <a href="#">page 1028</a>
SHT-2018-TRM18x4	TR18x4	right	SHTS-20 ► <a href="#">page 1028</a>
SHT-2018-TRM18x4-L	TR18x4	left	SHT-20 ► <a href="#">page 1024</a>
SHT-2018-TRM18x8	TR18x8P4	right	SHT-20 ► <a href="#">page 1024</a>
SHT-2018-TRM18x8-L	TR18x8P4	left	SHT-20 ► <a href="#">page 1024</a>

Please note: not symmetrical

## Lead screw nuts



### Dimensions [mm]

Part number	Thread	Hand of rotation	from SHT Linear module
SWZ-063001	M8x1	right	SLW-0630 ► <a href="#">page 1038</a>
SWZ-063003	M8x1	left	SLW-0630 ► <a href="#">page 1038</a>
SWZ-063009	TR8x1.5	right	SLW-0630 ► <a href="#">page 1038</a>
SWZ-063010	TR8x1.5	left	SLW-0630 ► <a href="#">page 1038</a>
SWZ-063007	SG8x10	right	SLW-0630 ► <a href="#">page 1038</a>
SWZ-063008	SG8x10	left	SLW-0630 ► <a href="#">page 1038</a>
SWZ-063004	SG8x15	right	SLW-0630 ► <a href="#">page 1038</a>

**delivery** from stock  
**time**

**prices** price list online  
[www.igus.eu/drylin-leadscrewdrives](http://www.igus.eu/drylin-leadscrewdrives)