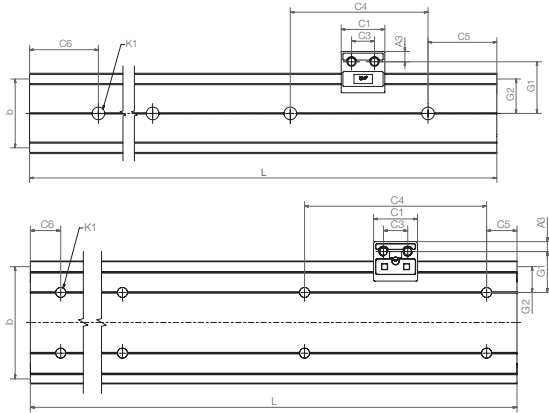
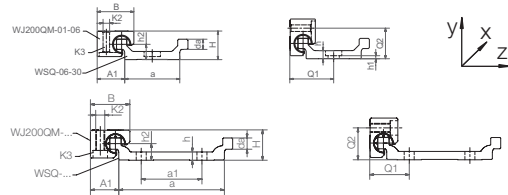
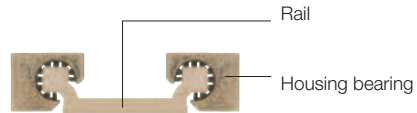


Double rail, square



i Hard anodized surface
▶ page 892



drylin® W Guide Rails – Dimensions [mm]

Part number	Weight [kg/m]	H* ±0.07	da -0.1 max.	L	a	A1	b	h	h1	h2	G1	G2	a1**	Q1	Q2
WSQ-06-30	0.45	14	5	3,000	27-0.4	13.5	30	4	4***	7.5	22.5	15	-	21.5	15
WSQ-10-40	0.92	20	75	4,000	36-0.5	18.5	40	5.5	5.5***	11	30	20	-	29	21
WSQ-10-80	1.41	20	7.5	4,000	70-0.7	25.0	74	5.5	5.5***	11	27	17	40	26	21
WSQ-10-120 New!	2.02	20	7.5	4,000	116-0.7	18.5	120	5.5	5.5	11	30	20	80	29	21
WSQ-16-60	1.84	27	11.5	4,000	54-0.5	30.0	58	7.5	3.5	14	43	29	-	42	28
WSQ-20-80 New!	3.30	36	15	4,000	74-0.7	30	82	9.5	4.5	20	38	21	40	37	37

Part number	C4	C5 min. max.	C6 min. max.	K1 for Screw DIN 912	ly [mm²]	lz [mm²]	Wby [mm²]	Wbz [mm²]		
WSQ-06-30	60	20	49.5	20	49.5	M5***	19,000	1,250	1,100	200
WSQ-10-40	120	20	79.5	20	79.5	M6***	71,600	5,580	3,000	610
WSQ-10-80	120	20	79.5	20	79.5	M6***	335,000	7,070	8,300	700
WSQ-10-120 New!	120	20	79.5	20	79.5	M6***	1,175,000	8,000	18,400	760
WSQ-16-60	120	20	79.5	20	79.5	M8	324,700	20,500	9,400	1,700
WSQ-20-80 New!	120	20	79.5	20	79.5	M8	1,145,000	75,300	23,600	4,500

* Height dimension minus the bearing clearance tolerance

** WSQ-06-30 and WSQ-10-40 a single row of mounting holes down the centreline, WSQ-10-80 two parallel rows of mounting holes

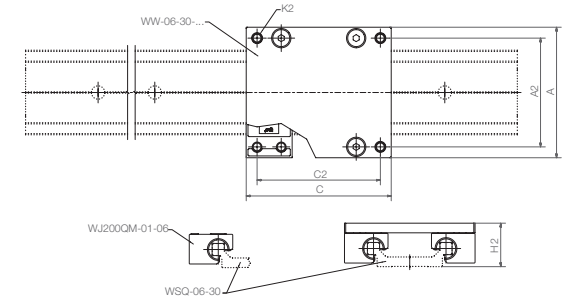
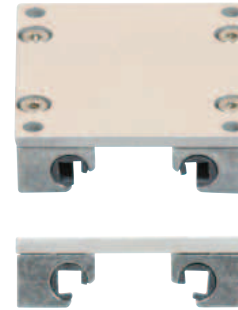
*** Trough bore

delivery from stock
time

prices price list online
www.igus.eu/eu/drylinW

order key complete ▶ page 972

Guide carriage, fitted, square



drylin® W Guide Carriage, Fitted – Load Data and Dimensions [mm]

Part number	Part number Suitable Rail	Weight [kg]	Width Length		A2	C2	K2	H2 ±0.17	Stat. Load Capacity				
			A	C					Coy	Coz	Mox	Moy	Moz
WW-06-30-06	WSQ-06-30	0.10	54	60	45	51	M4	18	1,680	840	25	34	34
WW-06-30-08	WSQ-06-30	0.11	54	80	45	71	M4	18	1,680	840	25	51	51
WW-06-30-10	WSQ-06-30	0.12	54	100	45	91	M4	18	1,680	840	25	68	68

Fits to double rail, square ▶ page 958

delivery from stock
time

prices price list online
www.igus.eu/eu/drylinW

order key complete ▶ page 972