



mm

DryLin® W

Phone +49 - 22 03 - 96 49-145  
 Fax +49 - 22 03 - 96 49-334

igus® GmbH  
 51147 Cologne

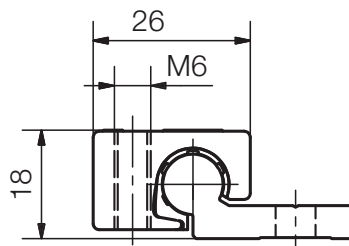
Internet [www.igus.de](http://www.igus.de)  
 E-mail [info@igus.de](mailto:info@igus.de)

63.10



**Besondere Eigenschaften**

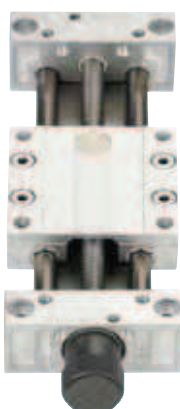
- Manual adjustable clearance by “Turn-To-Fit” function with allen key (included in delivery)
- adjusting screw: torque max. 0,1 Nm
- 100% lubrication-free
- compact dimensions
- 8 different rail profiles available



Developed for applications in:



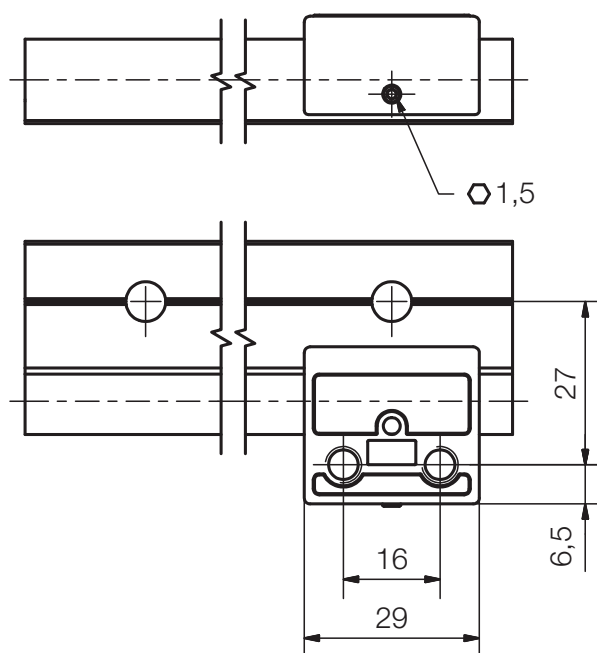
DryLin® W  
 linear guide  
 system



DryLin® SLW  
 lead screw  
 module



DryLin® ZLW  
 belt drive



**Dimensions [mm]**

Part No.	Weight [g]	B [mm]	C1 [mm]	C3 [mm]	A3 [mm]	K2 [mm]	H [mm]	SW [mm]	G1 [mm]
WJUME-01-10	43	26	20	16	6,5	M6	18	1,5	27
WJ200UME-01-16	110	34,5	36	18	0	M8	27	2,5	33
WJ200UME-01-20	222	42,5	45	27	0	M8	36	2,5	38