



- The recommended shaft material for all linear plain bearings made from iglidur® J and iglidur® J200
- Material: EN AW 6061/6060
- Straightness: EN 754-3
- Hardness: 75 HB
- Surface: hard anodised
- Surface hardness: 450-550 HV
- Inch dimensions on request

Dimensions [mm]

Part No.	Design	Outer Ø	Tolerance	Insulation thickness	Inner Ø	Max. length	Weight [kg/m]
AWMP-06	Solid shaft	6	h8	–	–	3,000	0.08
AWMP-08	Solid shaft	8	h8	–	–	3,000	0.14
AWMP-10	Solid shaft	10	h8	–	–	3,000	0.22
AWMP-12	Solid shaft	12	h8	–	–	3,000	0.32
AWMP-16	Solid shaft	16	h8	–	–	3,000	0.56
AWMP-20	Solid shaft	20	h8	–	–	3,000	0.88
AWMP-25	Solid shaft	25	h8	–	–	3,000	1.37
AWMP-30	Hollow shaft	30	h8	7.5	15	3,000	1.48
AWMP-40	Hollow shaft	40	h8	10	20	3,000	2.63
AWMP-50	Hollow shaft	50	h8	11	28	3,000	3.75
AWMP-60	Hollow shaft	60	h8	11	38	3,000	4.7

Part No.	Design	Outer Ø	Tolerance	Insulation thickness	Inner Ø	Max. length	Weight [kg/m]
AWMR-12	Tube	12	h8	2	8	3,000	0.17
AWMR-16	Tube	16	h8	2	12	3,000	0.25
AWMR-20	Tube	20	h9	2	16	3,000	0.32
AWMR-25	Tube	25	h9	3	19	3,000	0.59



Order example:

AWMP-12-500 corresponds to a precision aluminium shaft Ø 12 mm, 500 mm in length



Order key

Type	Size	Options
A W M P - 06 - 2000		
Aluminium shaft	Metric	Precision
Outer Ø	Shaft length [mm]	

AWMP: Solid shaft up to Ø 25 mm
hollow shaft from Ø 30 mm

AWMR: Tube



Hard anodised surfaces

► Page 764



- Material: EN AW 6061/6060
- Straightness: DIN 12020
- Hardness: 75 HB
- Surface: hard anodised
- Hardness: 450-550 HV
- Hole pitches symmetrical C5 = C6



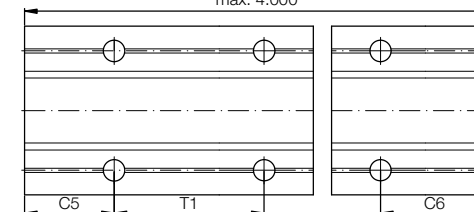
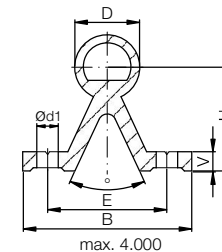
Hard anodised surfaces

► Page 764



Order key

Type	Size	Options
A W M U - 12 - 2000		
Aluminium shaft	Metric	Supported
Outer Ø	Shaft length [mm]	



Dimensions [mm]

Part No.	D	B	H	V	d1	(°)	E	T1	C5/C6		Max. length	Weight [kg/m]
	-0.1		±0.25			±0.25		min.	max.			
AWMU-12	12	40	22	5	4.5	50	29	75	20	57	4,000	0.75
AWMU-16	16	45	26	5	5.5	50	33	100	20	69	4,000	1.00
AWMU-20	20	52	32	6	6.6	50	37	100	20	69	4,000	1.42
AWMU-25	25	57	36	6	6.6	50	42	120	20	79	4,000	1.81
AWMU-30	30	69	42	7	9.0	50	51	150	20	94	4,000	2.69
AWMU-40 ⁸⁶⁾	40	73	50	8	9.0	50	55	200	20	119	4,000	4.06

⁸⁶⁾ Tolerance for shaft diameter D is -0.15



Order example:

AWMU-16-500 corresponds to a supported aluminium shaft Ø 16 mm, 500 mm in length