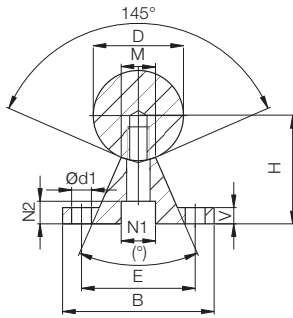
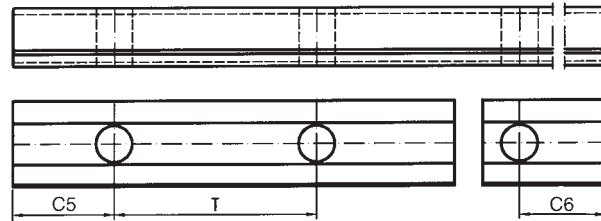
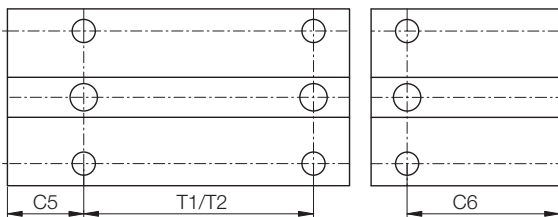
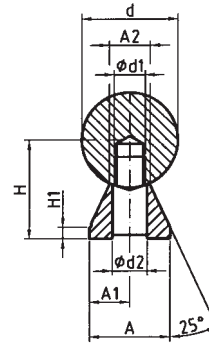




EWUM



EWUMN



DryLin® Shafts
mm

Phone +49 - 22 03 - 96 49-145
Fax +49 - 22 03 - 96 49-334

Dimensions [mm] – Supported Stainless Steel Shafts 1.4125

Part No.	D [mm]	B [mm]	H [mm]	V [mm]	N1 [mm]	N2 [mm]	d1 [mm]	M [mm]	(°)	E [mm]	T1* [mm]	C5/C6		T2 [mm]	C5/C6		Weigh [kg/m]
												min.	max.		min.	max.	
			±0,02								±0,15	Standard		Standard	Standard		
EWUM-12	12	40	22	5	8,0	5,0	4,5	5,8	50	29	75	20	57	120	20	79	1,75
EWUM-16	16	45	26	5	9,5	6,0	5,5	7,0	50	33	100	20	69	150	20	94	2,64
EWUM-20	20	52	32	6	11,0	6,5	6,6	8,3	50	37	100	20	69	150	20	94	3,97
EWUM-25	25	57	36	6	14,0	8,5	6,6	10,8	50	42	120	20	79	200	20	119	5,65
EWUM-30	30	69	42	7	17,0	10,5	9,0	11,0	50	51	150	20	94	200	20	119	7,93
EWUM-40	40	73	50	8	17,0	10,5	9,0	15,0	50	55	200	20	119	300	20	169	12,88
EWUM-50	50	84	60	9	19,0	12,5	11,0	19,0	46	63	200	20	119	300	20	169	19,60

* Two hole pitches are available, T2 (standard) or T1

Dimensions [mm] – Low Level Supported Stainless Steel Shafts 1.4125

Part No.	d [mm]	H [mm]	H1 [mm]	A [mm]	A1 [mm]	A2 [mm]	d1	d2 [mm]	T [mm]	C5/C6 min.	C5/C6 max.	Weigh [kg/m]
EWUMN-12	12	14,5	3	11	5,5	5,4	M4	4,5	75	20	57	1,62
EWUMN-16	16	18	3	14	7,0	7,0	M5	5,5	75	20	57	2,54
EWUMN-20	20	22	3	17	8,5	8,1	M6	6,6	75	20	57	3,81
EWUMN-25	25	26	3	21	10,5	10,3	M8	9,0	75	20	57	5,62
EWUMN-30	30	30	3	23	11,5	11,0	M10	11,0	100	20	69,5	7,63
EWUMN-40	40	39	4	30	15,0	15,0	M12	13,5	100	20	69,5	13,47
EWUMN-50	50	46	5	35	17,5	19,0	M14	15,5	100	20	69,5	20,31

Low level supported shafts are delivered unmounted.

Order example: EWUMN-16-500 corresponds to a low level supported stainless steel shaft (1.4125) 16 mm Ø, 500 mm in length.

