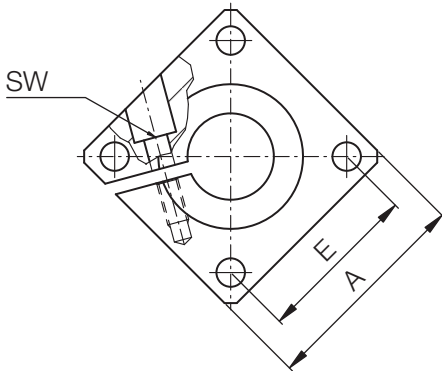
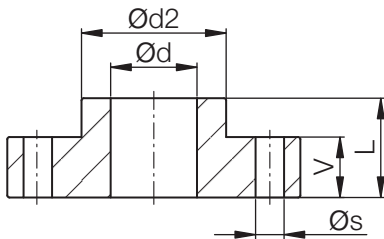




Besondere Eigenschaften

- Material: Aluminium
- ab Lager lieferbar



Abmessungen [mm]

Bestellnr.	Gewicht [kg]	Ø d [mm]	A [mm]	L [mm]	Ø d2 [mm]	E [mm]	Ø s [mm]	V [mm]	SW [mm]
WAF-12	0,06	12	40	20	23,5	30 ± 0,12	5,5	12	3
WAF-16	0,08	16	50	20	27,5	35 ± 0,12	5,5	12	3
WAF-20	0,10	20	50	23	33,5	38 ± 0,15	6,6	14	4
WAF-25	0,15	25	60	25	42,0	42 ± 0,15	6,6	16	5
WAF-30	0,30	30	70	30	49,5	54 ± 0,15	9,0	19	6
WAF-40	0,70	40	100	40	65,0	68 ± 0,25	11,0	26	8
WAF-50	1,20	50	100	50	75,0	75 ± 0,25	11,0	36	8

DryLin®-Wellen

mm

Telefon (0 22 03) 96 49-145
Telefax (0 22 03) 96 49-334

