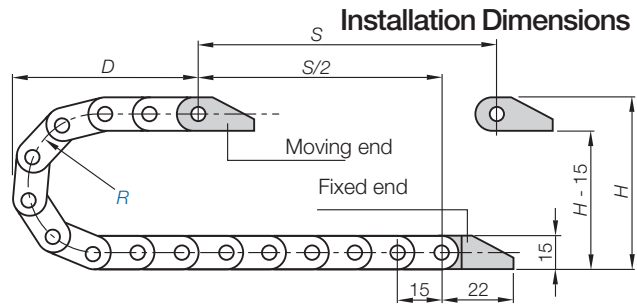


Pitch = 15 mm Links per m = 67 Chain length = $S/2 + K$

R	018	028	038
H	52	70	90
D	40	50	60
K	86	118	149

The required clearance height is $H_F = H + 10$ mm (with 0,2 kg/m fill weight). Please consult igus® if space is particularly restricted.

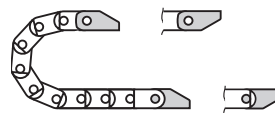
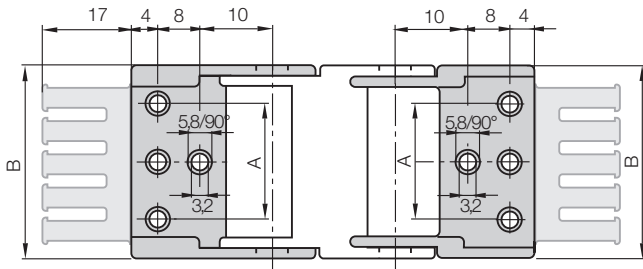


0650...1(PZ)

0650...2(PZ)

Moving end
0650...1(PZ)

Mounting Brackets



0650...2(PZ)
Fixed end

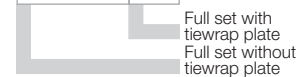


One-piece, polymer with or without strain relief tiwrap plates

For E-Chain®	Part No. full set with tiwrap plate	Part No. full set without tiwrap plate	Number of teeth	Dim. A [mm]	Dim. B [mm]
E065.16.	0650.16. 12 PZ	0650.16. 12	2	-	22,5
E065.2/9.	0650.2/9. 12 PZ	0650.2/9. 12	2	-	27
E065-Z065.3/9.	0650.3/9. 12 PZ	0650.3/9. 12	3	22	37
E065.4/9.	0650.4/9. 12 PZ	0650.4/9. 12	4	32	47

Part No. structure

0650.16.12	PZ
------------	----



Full set, for both ends:

0650.16.12 PZ (+ tiwrap plates)

Single-part order:

0650.16.1 PZ (+ tiwrap plates)

Mounting bracket moving end

0650.16.2 PZ (+ tiwrap plates)

Mounting bracket fixed end

Tiwrap plates are possible at the moving end and/or the fixed end!



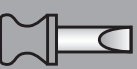
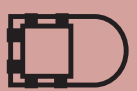
Quicksnap - the complete, detachable mounting unit



Quickfix - mounting bracket with dowel

Additional Features

For more features
▶ see link below



▶ 5.101

