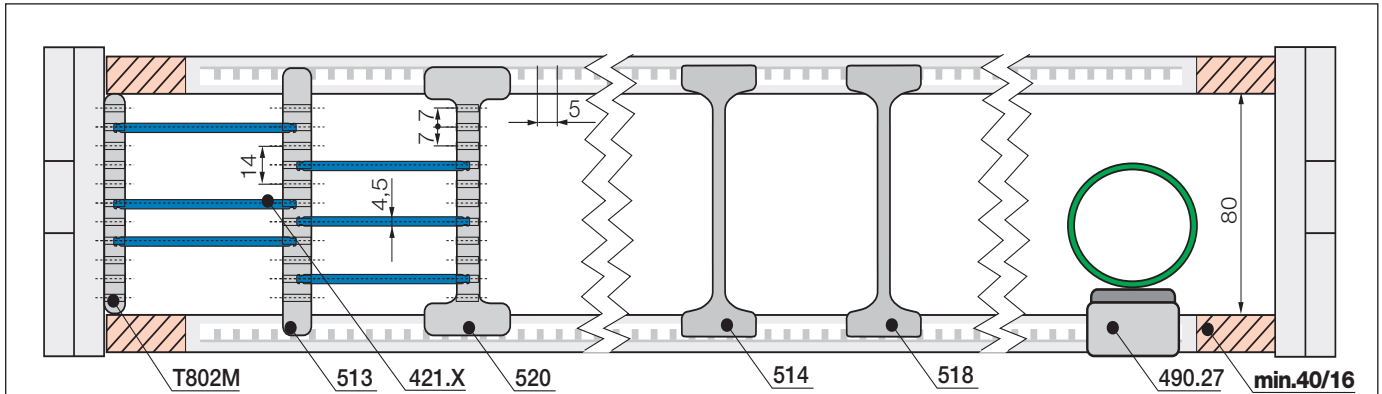


# E4.1 | Series E4.80 | Interior separation | Options

Elements of the previous interior separation program can still be ordered ▶ [www.igus.de/en/E4.80](http://www.igus.de/en/E4.80)

E4.80  
H4.80  
R4.80



**Note:** Please observe a lateral spacing to the sidelinks! **E-Tube: 40 mm** | **E-Chain®: 16 mm**  
In the standard configuration separators are assembled every 2nd E-Chain® link !

		<b>Middle plate for E-Chains® / E-Tubes</b> unassembled <b>503</b> assembled <b>513</b>
--	--	---

## Middle plate 503 (E-Chains® only)

Middle plates form the basic pattern of a shelf system. Shelves 420.X (table left page) can be arranged at 11 different heights (in 7 mm increments).

		<b>Locking vertical separator for E-Chains®</b> unassembled <b>510</b> assembled <b>520</b>
--	--	---

## Locking vertical separator 510 (E-Chains® only)

Works like middle plate, for applications exposed to very high humidity (> 85%).

		<b>Side plate for E-Chains® / E-Tubes</b> unassembled <b>T802</b> assembled <b>T802M</b>
--	--	--

## Side plate 402

Works like middle plate. Allows modular shelving close to the side links.

		<b>Locking separator for E-Chains®</b> unassembled <b>504</b> assembled <b>514</b>
--	--	--

## Locking separator 504

For applications exposed to very high humidity (> 85%). Locks with extra retention force. Tip: one locking separator per E-Chain® link for better mounting.

		<b>Locking separator for E-Chains®</b> unassembled <b>508</b> assembled <b>518</b>
--	--	--

## Locking separator 508

For applications exposed to very high humidity (> 85%). **Extra retention force** by asymmetric claws. Ensure proper alignment. Tip: one locking vertical separator per E-Chain® link for better mounting.

## Additional elements for interior separation

		<b>Rollclip for E-Chains®</b> unassembled <b>489.27</b> assembled <b>490.27</b>
--	--	---



For your online order, more products variety and configuration also use  
 ▶ [www.igus.de/en/E4.80](http://www.igus.de/en/E4.80) ▶ [www.igus.de/en/H4.80](http://www.igus.de/en/H4.80) ▶ [www.igus.de/en/R4.80](http://www.igus.de/en/R4.80)