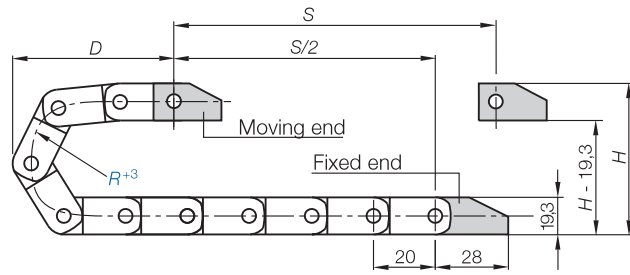


Pitch = 20 mm    Links per m = 50    Chain length =  $S/2 + K$

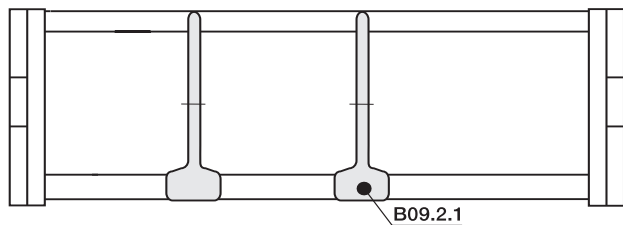
<b>R</b>	<b>028</b>	<b>038</b>	<b>048</b>
<b>H</b>	76	96	116
<b>D</b>	60	70	80
<b>K</b>	130	160	190

The required clearance height is  $H_F = H + 15$  mm (with 0,3 kg/m fill weight). Please consult igus® if space is particularly restricted.

Installation Dimensions



Zipper E-Chain®  
Inner height: 15 mm

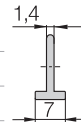


Standard **NEW** in this catalog

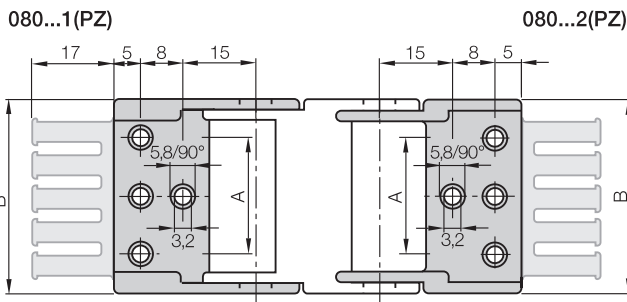
Vertical separator,  
slotted

unassembled **B09.2**

assembled **B09.2.1**



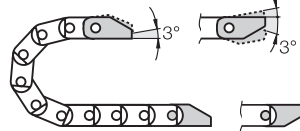
Interior Separation



Mounting Brackets

Moving end

080...1(PZ)



080...2(PZ)

Fixed end



One-piece, polymer pivoting with or without strain relief tiwrap plates

080.06.12 - 080.20.12: Center bores only

080.30.12 - 080.50.12: Bores (see figure above)

For E-Chain®	Part No. full set with tiwrap plate	Part No. full set without tiwrap plate	Number of teeth	Dim. A [mm]	Dim. B [mm]
09.10. ▶	080.10. 12 PZ	080.10. 12	1	-	18,2
09.16. ▶	080.16. 12 PZ	080.16. 12	2	-	24,2
09.20. ▶	080.20. 12 PZ	080.20. 12	2	-	28,2
09.30. ▶	080.30. 12 PZ	080.30. 12	3	22	38,2
09.40. ▶	080.40. 12 PZ	080.40. 12	4	32	48,2
09.50. ▶	080.50. 12 PZ	080.50. 12	5	42	58,2

Part No. structure

080.10.12 PZ

Full set with tiwrap plate  
Full set without tiwrap plate

Full set, for both ends:

080. 10. 12 PZ (+ tiwrap plates)

Single-part order:

080. 10. 1 PZ (+ tiwrap plates)

Mounting bracket moving end

080. 10. 2 PZ (+ tiwrap plates)

Mounting bracket fixed end

Tiwrap plates are possible at the moving end and/or the fixed end!



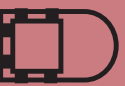
Quicksnap - the complete, detachable mounting unit



Quickfix - mounting bracket with dowel

Additional Features

For more features  
▶ see link below



▶ 5.79