

\* Bei Wanddicke < 1 mm: Fase = 20°  
Thickness < 1 mm: Chamfer = 20°

Abmessungen nach ISO 3547-1  
Dimensions according to ISO 3547-1

Wählen Sie Material und Abmessungen passend für Ihre Anwendung  
Choose the suitable material and dimensions for your application

- iglidur® A181
- A350
- A500
- G
- H1
- H370
- J
- J3
- J350
- P
- P210
- Q2
- W(300)
- X
- Z

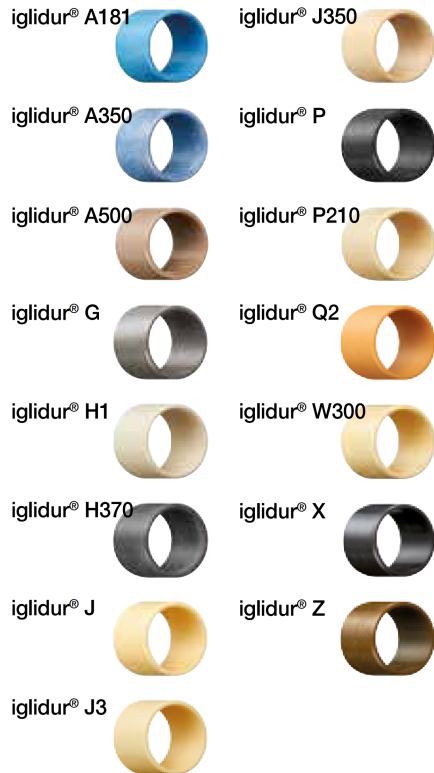
Typ Type	Abmessungen [mm] Dimensions			
SI	09	10	08	
Material wählen Choose material	SI = zylindrisch sleeve bearing	Innen-Ø Inner-Ø d1	Außen-Ø Outer-Ø d2	Länge Length b1



Bestellbeispiel Order example  
**H1SI-0910-08**

Flanschlager aus iglidur® H1,  
Innen-Ø Inner-Ø: 9/16 Inch,  
Außen-Ø Outer-Ø: 21/32 Inch,  
Länge Length: 1/2 Inch

# ... alle Materialien ... in Inch



Zylindrische Gleitlager Sleeve bearing

d1	d2	b1	Art.-Nr. Part No.
1/8	3/16	3/16	SI-0203-03
3/16	1/4	1/4	SI-0304-04
3/16	1/4	3/8	SI-0304-06
1/4	5/16	3/8	SI-0405-06
1/4	5/16	1/2	SI-0405-08
5/16	3/8	1/4	SI-0506-04
5/16	3/8	3/8	SI-0506-06
5/16	3/8	1/2	SI-0506-08
3/8	15/32	1/4	SI-0607-04
3/8	15/32	3/8	SI-0607-06
3/8	15/32	1/2	SI-0607-08
3/8	15/32	5/8	SI-0607-10
3/8	15/32	3/4	SI-0607-12
7/16	17/32	1/2	SI-0708-08
7/16	17/32	3/7	SI-0708-12
1/2	19/32	1/4	SI-0809-04
1/2	19/32	3/8	SI-0809-06
1/2	19/32	1/2	SI-0809-08
1/2	19/32	5/8	SI-0809-10
1/2	19/32	3/4	SI-0809-12
1/2	19/32	1	SI-0809-16
9/16	21/32	1/2	SI-0910-08

Zylindrische Gleitlager Sleeve bearing

d1	d2	b1	Art.-Nr. Part No.
9/16	21/32	5/8	SI-0910-10
9/16	21/32	3/4	SI-0910-12
5/8	23/32	1/2	SI-1011-08
5/8	23/32	3/4	SI-1011-12
5/8	23/32	1	SI-1011-16
3/4	7/8	1/2	SI-1214-08
3/4	7/8	3/4	SI-1214-12
3/4	7/8	1	SI-1214-16
7/8	1	1/2	SI-1416-08
7/8	1	3/4	SI-1416-12
7/8	1	1	SI-1416-16
1	1 1/8	1/2	SI-1618-08
1	1 1/8	3/4	SI-1618-12
1	1 1/8	1	SI-1618-16
1 1/8	1 1/4	3/4	SI-1820-12
1 1/8	1 1/4	1	SI-1820-16
1 1/8	1 1/4	1 1/4	SI-1820-20
1 1/4	1 13/32	3/4	SI-2022-12
1 1/4	1 13/32	1	SI-2022-16
1 1/4	1 13/32	1 1/4	SI-2022-20
1 1/2	1 21/32	1	SI-2426-16
1 1/2	1 21/32	1 1/2	SI-2426-24

d1	d2	b1	Art.-Nr. Part No.
1 5/8	1 25/32	1	SI-2629-16
1 5/8	1 25/32	1 1/2	SI-2629-24
1 3/4	1 15/16	1	SI-2831-16
1 3/4	1 15/16	2	SI-2831-32
1 7/8	2 1/16	1	SI-3033-16
1 7/8	2 1/16	2	SI-3033-32
2	2 3/16	1	SI-3235-16
2	2 3/16	2	SI-3235-32



Lieferbar Available  
**ab Lager from stock**

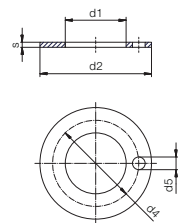
(4 Wochen für Erstauslieferung)  
(4 weeks for initial delivery)



Online berechenbar Calculate online  
[www.igus.de/iglidur-experte](http://www.igus.de/iglidur-experte)  
[www.igus.eu/iglidur-expert](http://www.igus.eu/iglidur-expert)

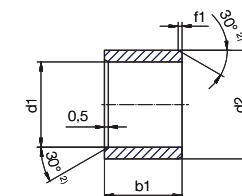


Mehr Informationen More information  
[www.igus.de/iglidur-standards](http://www.igus.de/iglidur-standards)  
[www.igus.eu/iglidur-standards](http://www.igus.eu/iglidur-standards)



Dimensions thrust washer Abmessungen Anlaufscheiben [mm]

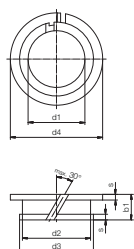
Part No. Art.-Nr.	d1	d2	s	d4 h13	d5
GTM-0825-015	8	25	1.5	-	-
GTM-1220-010	12	20	1	-	-
GTM-4060-035	40	60	3.5	-	-
JTM-0615-015	6	15	1.5	-	-
JTM-0815-015	8	15	1.5	-	-
JTM-0818-015	8	18	1.5	13	1.5
JTM-1018-010	10	18	1	-	-
JTM-2644-015	26	44	1.5	35	3
JTM-6290-020	62	90	2	-	-



Dimensions sleeve  
Abmessungen zylindrisch [inch]

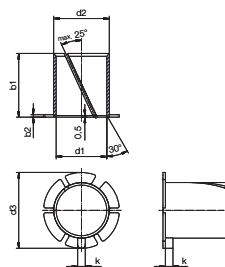
Part No. Art.-Nr.	d1	d1 tolerance d1-Toleranz	d2	b1 h13
A181SI-0406-06	1/4	+0.2539 +0.2516	3/8	3/8
GSI-1216-08	3/4	+0.7590 +0.7560	1	1/2
GSI-1620-55	1	+1.0092 +1.0062	1 1/4	55/16
GSI-1620-14	1	+1.0092 +1.0062	1 1/4	7/8
GSI-1620-44	1	+1.0092 +1.0062	1 1/4	11/4
GSI-2428-44	1 1/2	+1.5107 +1.5067	1 3/4	11/4
GSI-2428-20	1 1/2	+1.5107 +1.5067	1 3/4	1 1/4
GSI-5659-48	3 1/2	+3.5830 +3.5028	59/16	3
H1SI-0810-12	1/2	+0.5034 +0.5006	5/8	3/4

Part No. Art.-Nr.	d1	d1 tolerance d1-Toleranz	d2	b1 h13
JSI-1011-10	5/8	+0.6280 +0.6253	23/32	5/8
JSI-1011-14	5/8	+0.6280 +0.6253	23/32	7/8
JSI-1011-20	5/8	+0.6280 +0.6253	23/32	1 1/4
JSI-2226-32	1 3/8	+1.3809 +1.3770	1 5/8	2
Q2SI-4852-48	3	+3.0071 +3.0024	3 1/4	3
QSI-2428-16	1 1/2	+1.5059 +1.5020	1 3/4	1
QSI-2428-24	1 1/2	+1.5059 +1.5020	1 3/4	1
QSI-2428-40	1 1/2	+1.5059 +1.5020	1 3/4	5/2



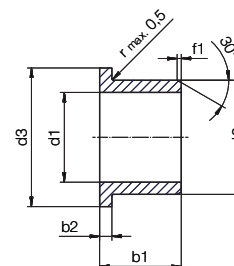
Dimensions clips bearing  
Abmessungen Clipslager [mm]

Part No. Art.-Nr.	d1	d2	d3	d4	s	b1
MCM-12-018	12.0	13.6	14.4	17.0	0.8	3.4



Dimensions split bearing  
Abmessungen Schlitzlager [inch]

Part No. Art.-Nr.	d1	d2	b1	d3	b2
MYI-05-10	5/16	0.3744	5/8	1/2	0.0299



Dimensions with flange  
Abmessungen mit Bund [inch]

Part No. Art.-Nr.	d1	d1 tolerance d1-Toleranz	d2	d3	b1 h13	b2
GFI-1012-08	5/8	+0.6297 +0.6270	3/4	1/2	1	0.062
GFI-1012-12	5/8	+0.6297 +0.6270	3/4	3/4	1	0.062
GFI-1012-16	5/8	+0.6297 +0.6270	3/4	1	1	0.062
GFI-1214-18	3/4	+0.7541 +0.7505	7/8	1 1/4	1.125	0.062
ZFI-0304-06	3/16	+0.1888 +0.1869	1/4	3/8	0.375	0.032

Calculate online Online berechenbar  
[www.igus.eu/iglidur-experte](http://www.igus.eu/iglidur-experte)  
[www.igus.de/iglidur-expert](http://www.igus.de/iglidur-expert)

Available Lieferbar  
 from stock ab Lager

[www.igus.de/iglidur](http://www.igus.de/iglidur)  
[www.igus.eu/iglidur](http://www.igus.eu/iglidur)

Calculate online Online berechenbar  
[www.igus.eu/iglidur-experte](http://www.igus.eu/iglidur-experte)  
[www.igus.de/iglidur-expert](http://www.igus.de/iglidur-expert)

Available Lieferbar  
 from stock ab Lager

[www.igus.de/iglidur](http://www.igus.de/iglidur)  
[www.igus.eu/iglidur](http://www.igus.eu/iglidur)