

# iglidur® MDM – Double Flange Bearing: clip in, finished



- big flange areas

---

- symmetrical flange

---

- easy assembly

---

- clips in easily

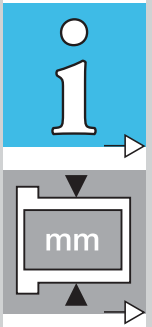
---

- cannot be lost in paintshop process

---

iglidur® MDM

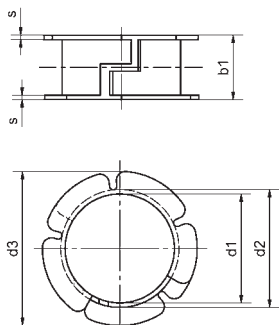
Phone +49 - 22 03 - 96 49-145  
 Fax +49 - 22 03 - 96 49-334





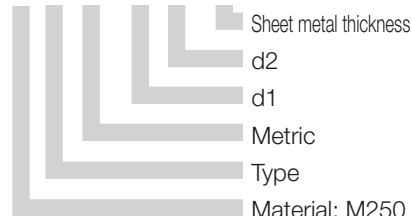
# iglidur® MDM | Double Flange Bearing

Clip-on bearing with a symmetrical, double flange. The large second flange allows the bearing to withstand high axial forces and ensures secure mounting even in the case of large tolerances.



Data in mm

Structure – part no.  
**MD M-1213-06**



## Special properties:

- Big flange areas
- Symmetrical flange
- Easy assembly
- Clips in easily
- Cannot be lost in paintshop process



### Material

iglidur® M250  
▶ chapter 4

## Dimensions [mm]

iglidur® MDM

Part No.	d1 [mm]	d2 [mm]	d3 [mm]	b1 [mm]	s
MDM-1213-06	12	13	16,5	7	0,5



We welcome your request for a pre-tensioned bearing customised for your application.

Phone +49 - 22 03 - 96 49-145

## Order example

Our price breaks are defined by the order quantity.

1– 9	25–49	100–199	500– 999	2500–4999
10–24	50–99	200–499	1000–2499	

For the current prices please visit the iglus®-Homepage [www.igus.de/en](http://www.igus.de/en)

No minimum order quantities, no surcharges.



Internet [www.igus.de](http://www.igus.de)  
E-mail [info@igus.de](mailto:info@igus.de)

Phone +49 - 22 03 - 96 49-145  
Fax +49 - 22 03 - 96 49-334

igus® GmbH  
51147 Cologne