

iglidur® Z Kapitel ▶ Seite 255

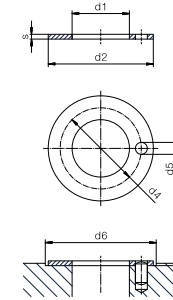
d1	d2	b1	d3	b2	d1 ³⁾		Einpressbohrung		Wellenmaße		Art.-Nr.
					max.	min.	max.	min.	max.	min.	
1/8	3/16	3/16	.3120	.0320	.1266	.1247	.1878	.1873	.1243	.1236	ZFI-0203-03
3/16	1/4	1/4	.3750	.0320	.1888	.1869	.2503	.2497	.1865	.1858	ZFI-0304-04
1/4	5/16	3/8	.5000	.0320	.2518	.2495	.3128	.3122	.2490	.2481	ZFI-0405-06
1/4	5/16	1/2	.5000	.0320	.2518	.2495	.3128	.3122	.2490	.2481	ZFI-0405-08
5/16	3/8	1/4	.5620	.0320	.3143	.3120	.3753	.3747	.3115	.3106	ZFI-0506-04
5/16	3/8	3/8	.5620	.0320	.3143	.3120	.3753	.3747	.3115	.3106	ZFI-0506-06
5/16	3/8	1/2	.5620	.0320	.3143	.3120	.3753	.3747	.3115	.3106	ZFI-0506-08
3/8	15/32	1/4	.6870	.0460	.3768	.3745	.4691	.4684	.3740	.3731	ZFI-0607-04
3/8	15/32	3/8	.6870	.0460	.3768	.3745	.4691	.4684	.3740	.3731	ZFI-0607-06
3/8	15/32	1/2	.6870	.0460	.3768	.3745	.4691	.4684	.3740	.3731	ZFI-0607-08
3/8	15/32	3/4	.6870	.0460	.3768	.3745	.4691	.4684	.3740	.3731	ZFI-0607-12
7/16	17/32	1/2	.7500	.0460	.4399	.4371	.5316	.5309	.4365	.4355	ZFI-0708-08
1/2	19/32	1/4	.8750	.0460	.5024	.4996	.5941	.5934	.4990	.4980	ZFI-0809-04
1/2	19/32	3/8	.8750	.0460	.5024	.4996	.5941	.5934	.4990	.4980	ZFI-0809-06
1/2	19/32	1/2	.8750	.0460	.5024	.4996	.5941	.5934	.4990	.4980	ZFI-0809-08
1/2	19/32	3/4	.8750	.0460	.5024	.4996	.5941	.5934	.4990	.4980	ZFI-0809-12
1/2	19/32	1	.8750	.0460	.5024	.4996	.5941	.5934	.4990	.4980	ZFI-0809-16
5/8	23/32	1/2	.9370	.0460	.6274	.6246	.7192	.7184	.6240	.6230	ZFI-1011-08
5/8	23/32	3/4	.9370	.0460	.6274	.6246	.7192	.7184	.6240	.6230	ZFI-1011-12
5/8	23/32	1	.9370	.0460	.6274	.6246	.7192	.7184	.6240	.6230	ZFI-1011-16
5/8	3/4	3/4	1.0000	.0460	.6284	.6256	.7510	.7500	.6250	.6240	ZFI-1012-08
3/4	7/8	1/2	1.1250	.0620	.7532	.7499	.8755	.8747	.7491	.7479	ZFI-1214-08
3/4	7/8	3/4	1.1250	.0620	.7532	.7499	.8755	.8747	.7491	.7479	ZFI-1214-12
3/4	7/8	1	1.1250	.0620	.7532	.7499	.8755	.8747	.7491	.7479	ZFI-1214-16
7/8	1	1/2	1.2500	.0620	.8782	.8749	1.0005	.9997	.8741	.8729	ZFI-1416-08
7/8	1	3/4	1.2500	.0620	.8782	.8749	1.0005	.9997	.8741	.8729	ZFI-1416-12
7/8	1	1	1.2500	.0620	.8782	.8749	1.0005	.9997	.8741	.8729	ZFI-1416-16
1	1 1/8	1/2	1.3750	.0620	1.0032	.9999	1.1255	1.1247	.9991	.9979	ZFI-1618-08
1	1 1/8	3/4	1.3750	.0620	1.0032	.9999	1.1255	1.1247	.9991	.9979	ZFI-1618-12
1	1 1/8	1	1.3750	.0620	1.0032	.9999	1.1255	1.1247	.9991	.9979	ZFI-1618-16
1 1/8	1 9/32	11/2	1.5620	.0780	1.1279	1.1246	1.2818	1.2808	1.1238	1.1226	ZFI-1820-12
1 1/8	1 9/32	11/2	1.5620	.0780	1.1279	1.1246	1.2818	1.2808	1.1238	1.1226	ZFI-1820-24
1 1/4	1 13/32	1	1.6870	.0780	1.2537	1.2498	1.4068	1.4058	1.2488	1.2472	ZFI-2022-16
1 1/4	1 13/32	1 1/4	1.6870	.0780	1.2537	1.2498	1.4068	1.4058	1.2488	1.2472	ZFI-2022-20
1 1/4	1 13/32	1 1/4	1.6870	.0780	1.2537	1.2498	1.4068	1.4058	1.2488	1.2472	ZFI-2022-24
1 1/2	1 21/32	1	2.0000	.0780	1.5037	1.4998	1.6568	1.6558	1.4988	1.4972	ZFI-2426-16
1 1/2	1 21/32	1 1/2	2.0000	.0780	1.5037	1.4998	1.6568	1.6558	1.4988	1.4972	ZFI-2426-24
1 3/4	1 15/16	2	2.3750	.0930	1.7536	1.7497	1.9381	1.9371	1.7487	1.7471	ZFI-2831-32
2	2 3/16	2	2.6250	.0930	2.0040	1.9993	2.1883	2.1871	1.9981	1.9969	ZFI-3235-32

³⁾ nach dem Einpressen. Messverfahren ▶ Seite 57

Anlaufscheiben



Abbildung exemplarisch



iglidur® A200 Kapitel ▶ Seite 371

d1 (Nenngröße)	d1 ³⁾		d2		s	Art.-Nr.
	max.	min.	max.	min.		
1/4	.2610	.2551	.6201	.6094	.0902	ATI-04
3/8	.3943	.3813	.7500	.7370	.0902	ATI-06
1/2	.5102	.5031	.8201	.8071	.0902	ATI-08
3/4	.7673	.7598	1.0654	1.0500	.0941	ATI-12
1	1.0268	1.0197	1.5000	1.4843	.1252	ATI-16

iglidur® G Kapitel ▶ Seite 79

d1	d2	s	d4	d5	h	d6	Art.-Nr.
+010	-010	-0020	±005	.015 + .005	+008	+005	
.5000	.8750	.0585	.6920	.0670	.0400	.8750	GTI-0814-01
.6250	1.1250	.0585	.8800	.0990	.0400	1.125	GTI-1018-01
.7500	1.2500	.0585	1.005	.0990	.0400	1.250	GTI-1220-01
.8750	1.5000	.0585	1.192	.1300	.0400	1.500	GTI-1424-01
1.0000	1.7500	.0585	1.380	.1300	.0400	1.750	GTI-1628-01
1.2500	2.1250	.0585	1.692	.1610	.0400	2.125	GTI-2034-01
1.5000	2.5000	.0585	2.005	.1920	.0400	2.500	GTI-2440-01
1.7500	2.7500	.0585	2.255	.1920	.0400	2.750	GTI-2844-01
2.0000	3.0000	.0895	2.505	.1920	.0700	3.000	GTI-3248-01

iglidur® M250 Kapitel ▶ Seite 95

d1 (Nenngröße)	d1 ³⁾		d2		s	Art.-Nr.
	max.	min.	max.	min.		
1/4	.2609	.2550	.6200	.6094	.0900	MTI-04
5/16	.3271	.3189	.6874	.6767	.0900	MTI-05
3/8	.3940	.3810	.7409	.7394	.0900	MTI-06
1/2	.5101	.5030	.8200	.8070	.0900	MTI-08
5/8	.6371	.6300	1.0000	.9870	.0940	MTI-10
3/4	.7675	.7600	1.0630	1.0500	.0940	MTI-12
1	1.0200	1.0100	1.5000	1.4843	.1250	MTI-16
1 1/4	1.2998	1.2900	2.1400	2.1220	.0980	MTI-20
1 1/2	1.6000	1.5500	2.6000	2.5500	.1250	MTI-24

³⁾ nach dem Einpressen. Messverfahren ▶ Seite 57