

Inside height
60

Inside widths
53 - 300

kabelschlepp.de

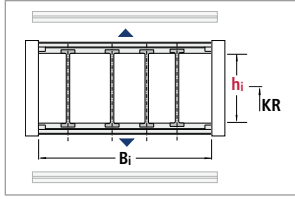
Types MASTER LT

Quiet and weight-optimized cable carriers

- Extremely quiet due to internal noise damping system
- Favorable ratio of inner to outer dimensions
- Standard bend radii, application-specific intermediate radii on request
- Variable pretension for many different applications possible
- Can be opened quickly on the inside and outside for cable laying
- Transmission of forces (tensile and thrust forces) over a large area – optimized link design – "life extending 2 disc principle"
- Wide range of options for internal subdivision
- Closed and open UMBs
- Various strain relief systems optionally available



Type LT with plastic cover system (stay variant RDL)



Fon: +49 2762 4003-0

Type	hi	Bi	Maximum travel length in m	Dynamics of unsupported arrangement		Page
				Travel speed v _{max} in m/s	Travel acceleration a _{max} in m/s ²	
LT 60	60	53 – 300	6.8*	6	30	295

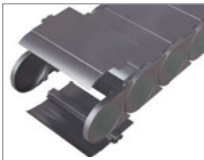
* only unsupported

Dimensions in mm

Carrier construction and cover system

Available in 25 mm width sections.

Opening options:
Outside/Inside: Unscrewable cover



Use our free project planning service.

Inside height

60

Inside widths

53
300

kabelschlepp.de

Fon: +49 2762 4003-0

OnlineEngineer.de
Hersteller KABELSCHLEPP
 Cable carrier design engineer

Types MASTER LT 60

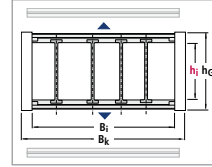
Dimensions and intrinsic chain weight

Plastic cover system (stay variant RDL)

Type	Stay variant	h _i	h _G	B _i min*	q _k min	B _i max	q _k max	B _k	Widths section
LT 60	RDL	60	88	75	3.21	300	6.07	B _i + 28	25

* also B_i 53 mm available

Dimensions in mm/Weights in kg/m



Bend radius and pitch

Type	Bend radii KR mm								
LT 60	150	200	250	300	350	400	500	-	-

Pitch:

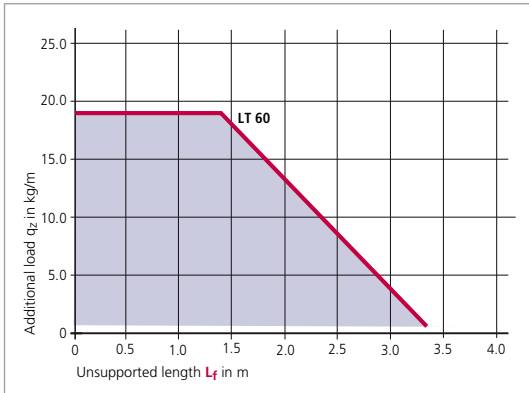
LT 60: t = 91 mm

The listed values are standard bend radii. For special applications it is also possible, to set any desired intermediate radii at the production stage.

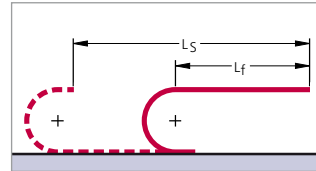
Please do get in touch with us, we would be happy to advise you.

Load diagram

for unsupported length L_f depending on the additional load*



Unsupported length L_f



In the case of longer travel lengths, sag of the cable carriers is technically permissible depending on the application.

In a gliding arrangement, even longer travel lengths are possible (see page 375).

We are at your service to advise on these applications.

Determining the length of the cable carrier see page 46.

* Load diagram for intrinsic chain weight q_k of 4.0 kg/m (L 60).

If the chain intrinsic weight exceeds these values, the permissible additional load is reduced by the difference.

Example of ordering

Cable carrier					Divider system		Connection
LT 60	300	RDL	300	1820	TS 0	3	FU/MU
Type	Inside width B _i in mm	Stay variant	Bend radius KR in mm	Chain length L _k in mm (without connection)	Divider system	Number of dividers n _T	Connection* Fixed point/Driver

Ordering divider systems:

Please state the designation of the divider system (TS 0, TS 1 ...) and the number of dividers. Possibly attach a sketch with the dimensions.

* If the standard connector is not required, please state this on the order.

Types MASTER LT 60

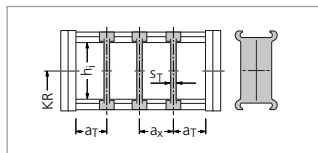
Divider system TS 0

Inside height
60

Inside widths
53
300

Type	h _i mm	S _T mm	a _T min mm	a _x min mm
LT 60	60	4	9	16

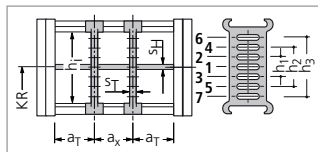
The dividers can be moved in the cross section. Dimensions in mm
In the standard version, the divider systems are mounted on every second chain link.



Divider system TS 1 with continuous height subdivision made of aluminum

Type	h _i mm	S _T mm	a _T min mm	a _x min mm	S _H mm	h ₁ mm	h ₂ mm	h ₃ mm
LT 60	60	4	9	16	4	15	30	45

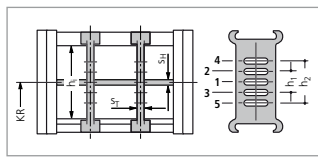
The dividers can be moved in the cross section. Dimensions in mm
In the standard version, the divider systems are mounted on every second chain link.



Divider system TS 3 with section subdivision, partitions made of plastic

Type	h _i mm	S _T mm	a _T min mm	a _x min mm	S _H mm	h ₁ mm	h ₂ mm
LT 60	60	8	6	16*	4	14	28

* When using plastic partitions Dimensions in mm
The dividers are fixed by the partitions, the complete divider system is movable.
In the standard version, the divider systems are mounted on every second chain link.

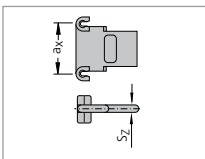


kabelschlepp.de

Fon: +49 2762 4003-0

Use our free project planning service.

Dimensions of the plastic partitions for TS 3



Sz	a _x (center-to-center dividers)									
4	16	18	23	28	32	33	38	43	48	58
	64	68	78	80	88	96	112	128	144	160
	176	192	208	-	-	-	-	-	-	-

Dimensions in mm

When using partitions with a_x > 112 mm there should be an additional central support with a twin divider.
Twin dividers are designed for subsequent fitting in the partition system.

Aluminum partitions in 1 mm width sections are also available.

Types MASTER LT 60

UMB (Universal Mounting Brackets) made of plastic

Various universal mounting brackets made of plastic provide a suitable connection for any assembly situation. Each type can be screwed from above, below or as a flange.



Inside height

60

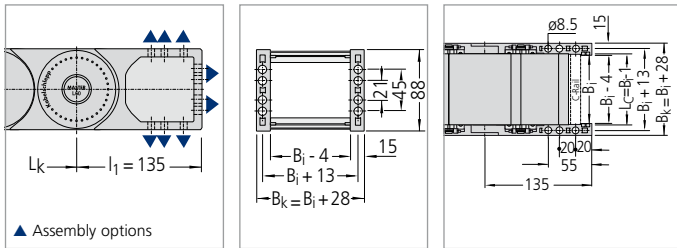
Inside widths

53

300

Connection dimensions

Standard connector and short, open connector



The dimensions of the fixed point and driver connections are identical.

Optional C-rails and strain relief elements for cables can be found on the following pages.

When ordering please specify the connection type FU/MU (see ordering key on page 419).

kabelschlepp.de

Fon: +49 2762 4003-0

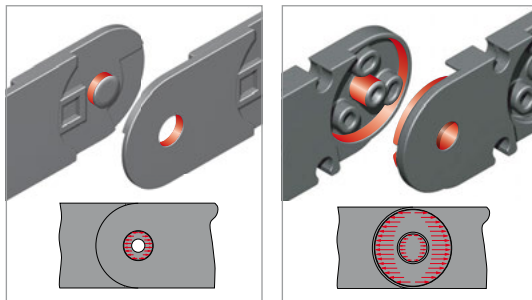
Minimized hinge wear owing to the "life extending 2 disc principle"

In the MASTER Series, the push and pull forces are transmitted via the optimum link design for this purpose.

As a result link wear is reduced to a minimum and the life of the cable carrier is considerably lengthened.

The internal stopper and pre-tensioning dampers have a noise-muffling effect. This makes the chain particularly quiet.

Should your application require it, the pre-tensioning (in deviation from the standard pre-tensioning) can be adjusted at the time of production. We can produce a cable carrier with a pre-tension which is exactly suited to the load values of your application.



■ Force transmission with a pin-hole joint

■ Force transmission with the "life extending 2 disc principle"

Types MASTER LT 60

Strain relief devices

C-rails for LineFix bracket clamps, SZL strain reliefs and clamps

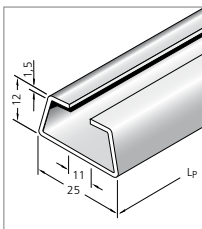
The optional C-rails are fixed by means of the universal mounting brackets and do not have to be screwed separately.

Please state in your order whether C-rails are needed.

Inside height



Inside widths



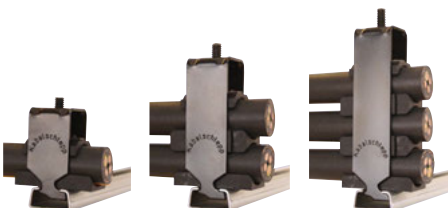
■ Universal mounting bracket with C-rail

■ **MASTER LT:**
Integratable C-rail
25 x 12 mm,
slit width 11 mm,
material steel,
Item-No. 3934

Our LineFix strain reliefs are optimally suited for the C-rails. (LineFix bracket clamps and other strain relief devices – see Accessories chapter, from page 381 onwards).



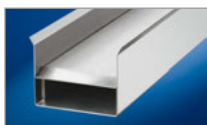
■ C-rail with LineFix strain relief



Fon:
+49 2762 4003-0

Use our free
project planning service.

Guide channels
▶ from page 375



Strain relief devices
▶ from page 381



Cables for cable carrier systems
▶ from page 438



Notes

Inside height



Inside widths



kabelschlepp.de

Font:
+49 2762 4003-0

OnlineEngineer.de
The Online Engineer
Cable Center - 24/7/365
