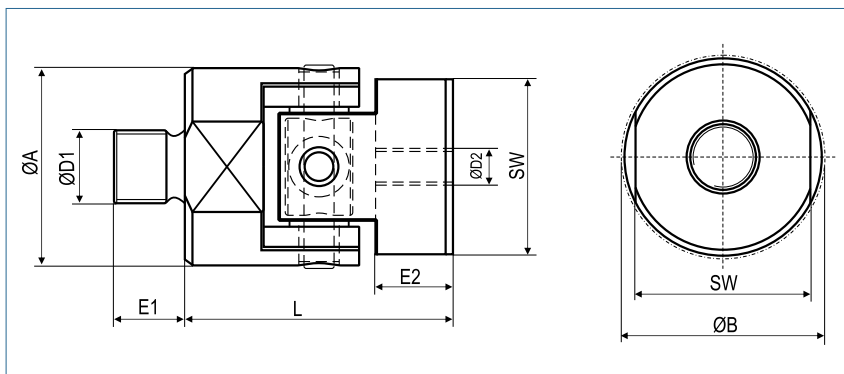


Cardan Coupling

Linear Coupling with threads

optional full stainless steel



Order Code

KBGK / 27 - M5 - M6

Type / Size

Thread
Ø D1

Thread
Ø D2

Size	axial force F _{KA} (N)	Dimensions (mm)					Technical Data					
		L Length	Ø A Outer Ø	SW wrench Size	E2 max. thread depth	B	Mass (kg)	Moment of Inertia J (kg mm ²)	Spring Stiffness axial CA (N/mm)	Misalignment		max. speed rpm
									radial Δ Kr (mm)	angular Δ Kw (°)		
18	200	24	18	16	5.5	19	0.013	0.52	8500	1	6	10000
27	800	36	27	24	10.5	30	0.046	4.25	14800	1	6	7500
35	1000	37	35	32	11	39	0.082	12.37	19000	1.5	6	6000
56	4000	60	56	50	15	61	0.31	121	33000	2	6	3750
75	7500	75	74.5	65	25	80	0.87	594	42800	2	6	2850
100	13000	78	100	90	27	106	1.83	2194	62000	2.5	6	2100

Size	Hub Style	Thread Size (transmittable axial force in N)													
		M3	M4	M5	M6	M8	M10	M12	M16	M20	M24	M30	M36	M42	M48
18	Thread D1	510	670	857	1017	1380									
	Thread Length E1	5	6	8	8	10									
	Thread D2	634	1105	1788	2531	4631									
27	Thread D1		670	857	1017	1380	1740								
	Thread Length E1		6	8	8	10	12								
	Thread D2	634	1105	1788	2531	4631	7313								
35	Thread D1					1380	1740	1970	2710						
	Thread Length E1					10	12	15	20						
	Thread D2			1788	2531	4631	7313	10603	9800						
56	Thread D1							1970	2710	3386	4064	5142			
	Thread Length E1							15	20	25	30	36			
	Thread D2					4631	7313	10603	9800	15400	22140	35344			
75	Thread D1									3386	4064	5142	6218		
	Thread Length E1									25	30	36	40		
	Thread D2						7313	10603	9800	15400	22140	35344	51390		
100	Thread D1											5142	6218	7296	8374
	Thread Length E1											36	40	48	55
	Thread D2							10603	9800	15400	22140	35344	51390	70484	92625

+ **Material** inner ring - aluminium
hub - aluminium
pin - steel

Temperature Range -100 °C ~ 250 °C