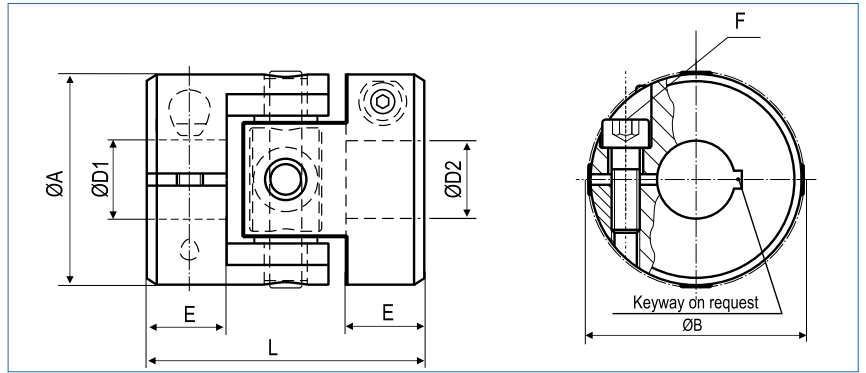


Cardan Coupling

with collet clamps

optional full stainless steel



Order Code

KBGK-T / 27 - 6 - 10

Type / Size

ØD1 (H7)

ØD2 (H1)

Size	Torque T_{KN} (Nm)	Torque T_{kmax} (Nm)	Dimensions (mm)					Technical Data						
			L Length	Ø A Outer Ø	D1/D2 Bore Sizes (H7)	B	E Hub-Length	F Screw (ISO 4762) TA (Nm)	Mass (kg)	Moment of Inertia J (kg mm ²)	Torsional Stiffness CT (Nm/rad)	Misalignment		max. speed rpm
											radial ΔKr (mm)	angular ΔKw (°)		
18	2	3	24	18	3-10	19	5.5	M2 0.54	0.011	0.526	458	0.6	6	10000
27	5	10	36	27	4-14	30	10.5	M3 1.9	0.040	4.30	802	1	6	7500
35	10	18	37	35	5-20	39	11	M4 4.6	0.069	12.19	1701	1.5	6	6000
56	35	100	53	56	8-32	61	15	M6 15.7	0.278	124	20630	2	6	3750
75	100	250	83	74.5	10-41	80	25	M8 38	0.76	609	51575	2	6	2850
100	250	580	97	100	20-55	106	27	M12 130	1.60	2246	85943	2.5	6	2100

18	Bore Size	3	4	5	6	7	8	9	10			
	Torque (Nm)	1.9	2	2.2	2.3	2.4	2.5	2.6	2.8			
27	Bore Size	4	5	6	7	8	9	10	11	12	13	14
	Torque (Nm)	6.9	7.2	7.4	7.7	8	8.3	8.6	8.9	9.2	9.4	9.7
35	Bore Size	5	6	7	8	9	10	12	14	16	18	20
	Torque (Nm)	16	16.4	16.9	17.4	18	18.5	19.5	20.5	21.6	22.6	23.6
56	Bore Size	8	10	12	14	16	18	20	22	24	28	32
	Torque (Nm)	57	59	61	64	66	69	72	73	76	80	85
75	Bore Size	10	12	14	16	18	20	24	28	32	36	40
	Torque (Nm)	143	147	151	156	160	164	173	181	190	199	207
100	Bore Size	20	22	24	26	28	30	35	40	45	50	55
	Torque (Nm)	475	485	495	505	515	525	550	575	600	625	650

+ **Material** inner ring - aluminium
hub - aluminium
pin - steel

Temperature Range -100 °C ~ 250 °C