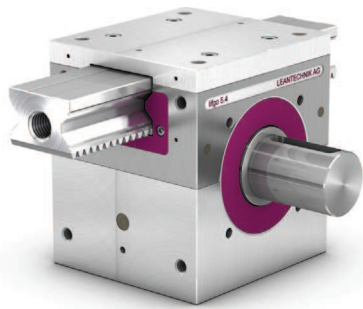
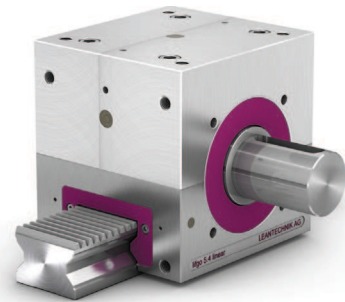


lifgo® & lifgo® linear 5.4 • Maßblatt



lifgo® 5.4



lifgo® linear 5.4

! Achten Sie auf die richtige Artikelnummer bezüglich der Ritzelwellen-Ausführung.



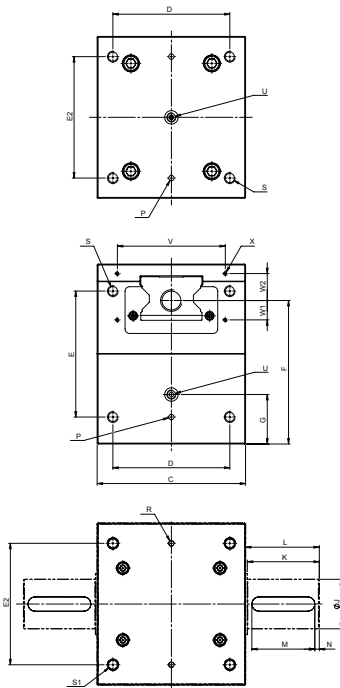
ZA 1



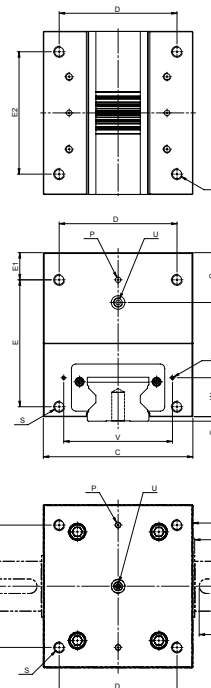
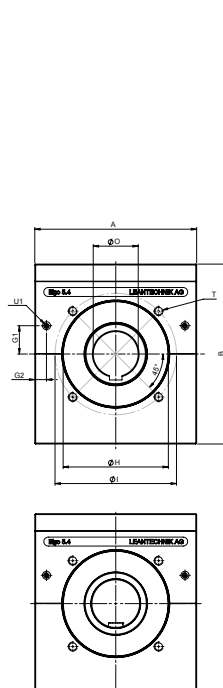
ZA 2



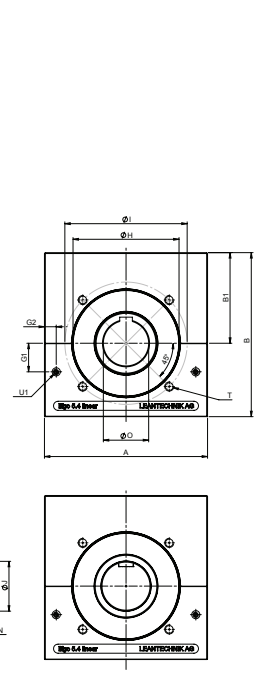
PFN



lifgo® 5.4



lifgo® linear 5.4



lifgo®-Getriebe	Einheit	lifgo® 5.4	lifgo® linear 5.4	
	A	mm	180	180
	B	mm	200	181
	B1	mm		100
	C	mm	165	165
	D	mm	130	130
	E	mm	140	140
	E1	mm		30
	E2	mm	135	135
	F	mm	159,5	5
	G	mm	55	55
	G1	mm	31,5	31,5
	G2	mm	13	13
Zentrierflansch	H	mm	∅ 117 H7 ↓ 3	∅ 117 H7 ↓ 3
	I	mm	∅ 135	135
Passfeder DIN 6885 P9	J	mm	∅ 55 h7	∅ 55 h7
	K	mm	80	80
	L	mm	82	82
	M	mm	70	70
Passfeder DIN 6885 P9	N	mm	5	5
	O	mm	∅ 50 H7	∅ 50 H7
	P	mm	∅ 6 H7 ↓ 10	∅ 6 H7 ↓ 10
	R	mm	∅ 6 H7 ↓ 10	∅ 6 H7 ↓ 10
	S	mm	M12 ↓ 35 ∅ 10,2 durch	M12 ↓ 35 ∅ 10,2 durch
	S1	mm	└┘ ∅ 12,5 ↓ 19 M12 ↓ 35 ∅ 10,2 durch	
Schmierbohrung	T	mm	M10 ↓ 10	M10 ↓ 20
Schmierbohrung	U	mm	M10 x 1 ↓ 10	M10 x 1 ↓ 10
	U1	mm	M6 ↓ 5	M6 ↓ 5
	V	mm	120	120
	W	mm		43
	W1	mm	21,5	
	W2	mm	30	
	X	mm	M4 ↓ 8	M4 ↓ 8
Gewicht ZA 1		kg	25,30	24,00
Gewicht ZA 2		kg	26,80	25,50
Gewicht PFN		kg	21,20	19,90

Artikelnummer	lifgo® 5.4	lifgo® linear 5.4
lifgo® ZA 1	500 008	500 040
lifgo® ZA 2	500 012	500 044
lifgo® PFN	500 016	500 048