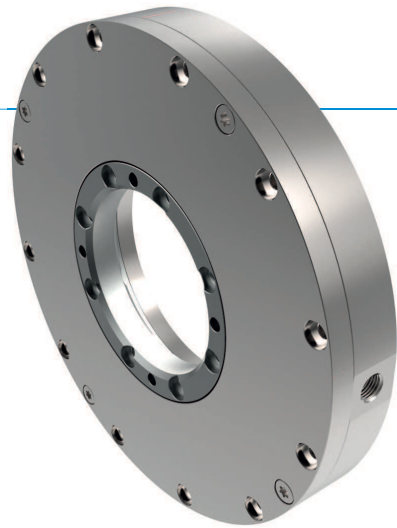


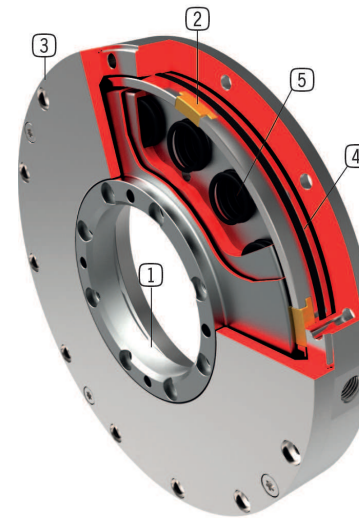
CLAMPING ELEMENTS SERIES TPS

▶ PRODUCT ADVANTAGES



- ▶ **Independent of the manufacturer**
For circular guides and shaft guides
- ▶ **Energize to open (NC)**
through spring-loaded energy storage
- ▶ **high durability**
Up to 5 million static clamping cycles
- ▶ **Safety element**
Safe clamping in case of energy failure

▶ TECHNICAL DETAILS



- ① **clamping washer**
- For fastening to the shaft
- ② **Clamping segments**
- Fastens clamping disk inside the element
- ③ **housing**
- chemically nickel plated steel
- ④ **Pneumatic piston**
- Ring pistons move the clamping segments longitudinally
- ⑤ **Spring-loaded energy storage**
- For non-pressurized closing of the clamping unit

▶ INFORMATION ON THE PRODUCTS

APPLICATION SCENARIOS

- ▶ **Torque take-up of shafts**
- ▶ **For deployment in torque motors**
- ▶ **For deployment in rotating disc contactors**

FURTHER INFORMATION

- ▶ **Special variants on request, e.g.**
With proximity switch monitoring
With low opening pressure (3.0 bar or 4.0 bar)

▶ INFORMATION ON THE SERIES

TECHNICAL DATA

incident wave quantity	15-320 mm
holding torque	60-1000
pressure min.	4
pressure max.	6
Spring-loaded energy storage	existing
PLUS connection	no
Clamping cycles	up to 5 million
Braking cycles	not suitable



▶ Technical Information

All information just a click away at: www.zimmer-group.de
Find data, illustrations, 3D models and operating instructions for your installation size using the order number for your desired product.
Quick, clear and always current.