

ECB10-S 全封闭式/皮带驱动



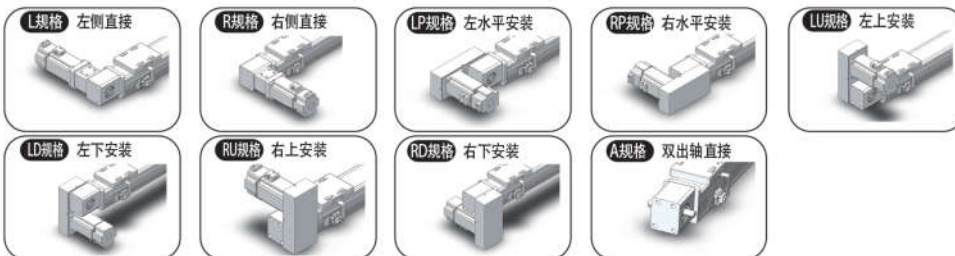
基本规格

伺服马达功率 (W)	200W / 400W	
重复定位精度 (mm)	±0.05	
皮带宽度	15	
导程(mm)	90	
最高速度(mm/s)	4500	
最大可搬质量(Kg)	水平	23
	墙面	11
标准有效行程(mm)	100~3000 (50 间距)	

型号构成



电机安装方向



注: ※1 重复定位精度为单方向的反复定位精度
 ※2 电机间接安装选择时方可选择
 ※3 容许悬臂长度是导轨寿命10,000km 时, 滑块上方中心至搬运中心的距离
 ※4 无特殊备注双出轴时马达统一装在左侧

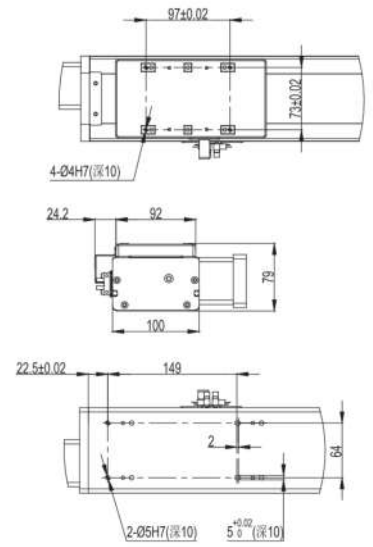
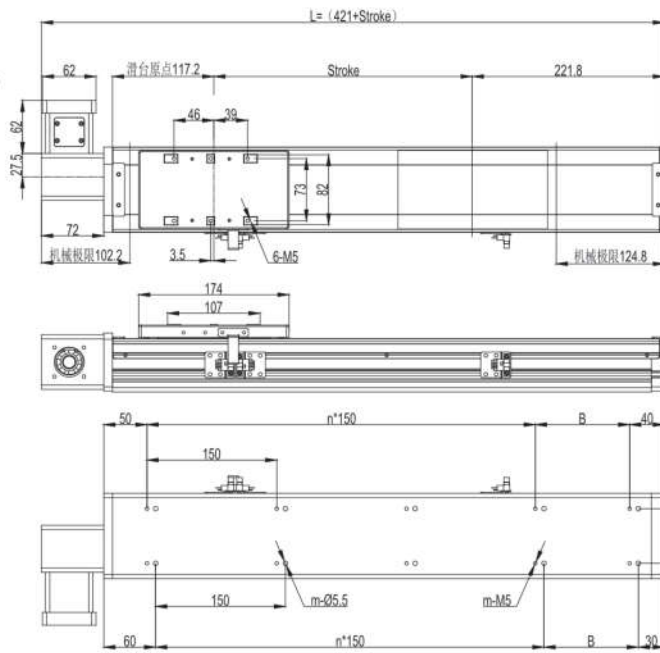
〈参考〉容许悬臂长度

水平使用时 (单位:mm)					墙面安装使用时 (单位:mm)					(单位:N.m)		
导程	负载 (Kg)	A	B	C	导程	负载 (Kg)	A	B	C	MR	MP	MY
90	5	1680	900	720	90	5	792	600	1320	28	28	28
	10	1200	420	420		10	420	264	960			

注: 容许悬臂长度是导轨寿命10,000km 时, 滑块上方中心至搬运中心的距离

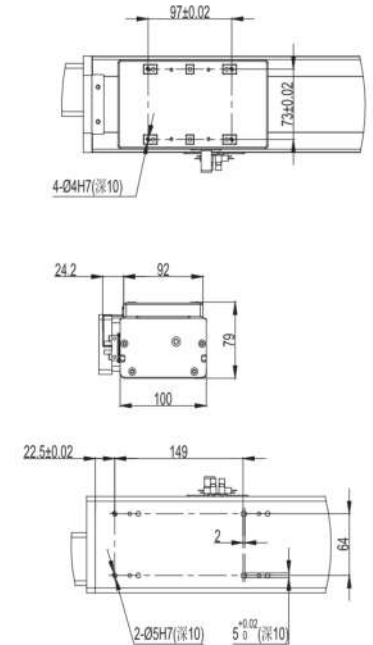
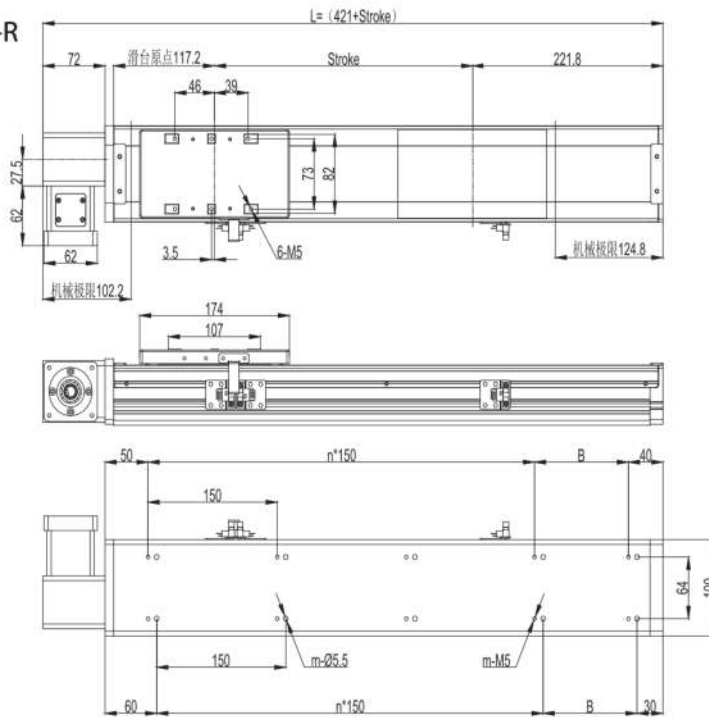
尺寸图

■ ECB10-S-L



行程 Stroke	100	200	300	400	500	600	700	800	900	1000
L	521	621	721	821	921	1021	1121	1221	1321	1421
B	59	159	109	59	159	109	59	159	109	59
n	2	2	3	4	4	5	6	6	7	8
m	8	8	10	12	12	14	16	16	18	20
Weight (kg)	4.9	5.7	6.5	7.3	8.1	8.9	9.7	10.5	11.3	21.1

■ ECB10-S-R

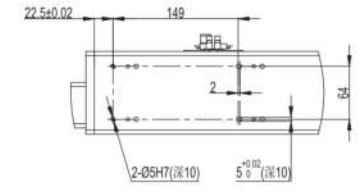
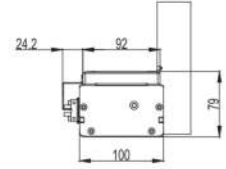
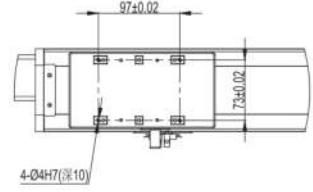
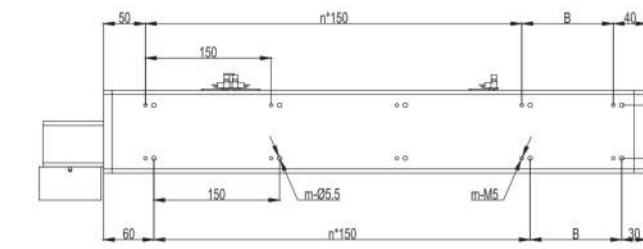
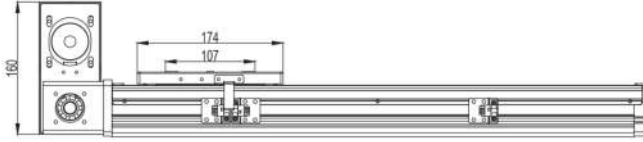
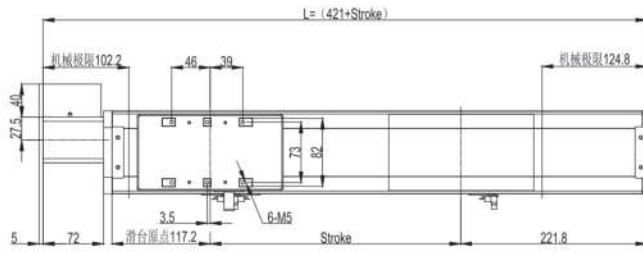


行程 Stroke	100	200	300	400	500	600	700	800	900	1000
L	521	621	721	821	921	1021	1121	1221	1321	1421
B	59	159	109	59	159	109	59	159	109	59
n	2	2	3	4	4	5	6	6	7	8
m	8	8	10	12	12	14	16	16	18	20
Weight (kg)	4.9	5.7	6.5	7.3	8.1	8.9	9.7	10.5	11.3	21.1

半封密螺杆
全封密螺杆
半封密皮带
全封密皮带
齿形带滑块
电动推杆
驱动一体式
直线引动器
减速机

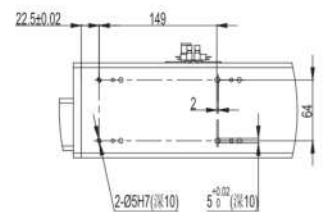
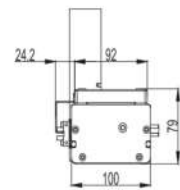
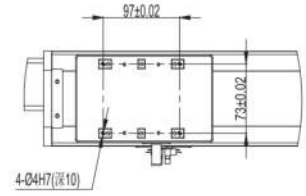
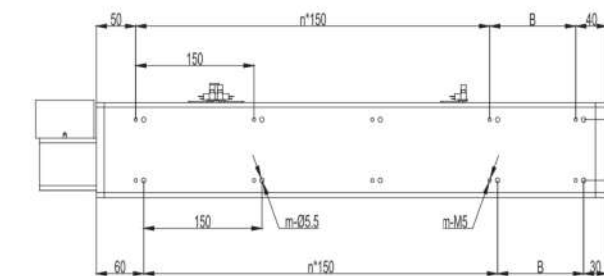
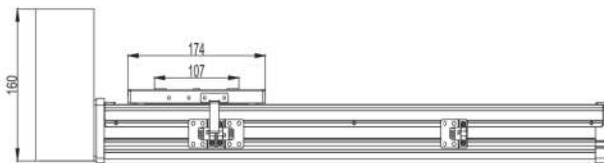
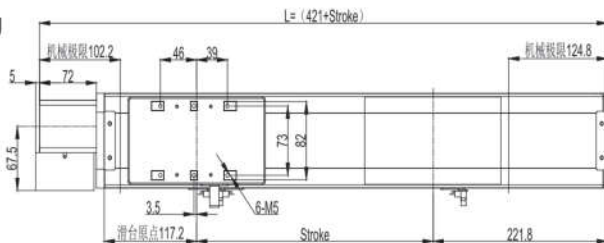
全封闭式/皮带驱动/ECB10-S

■ ECB10-S-LU



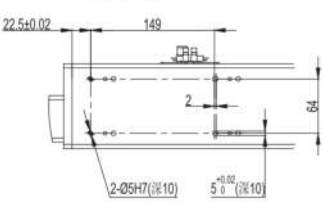
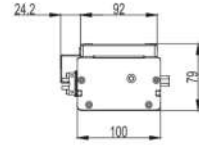
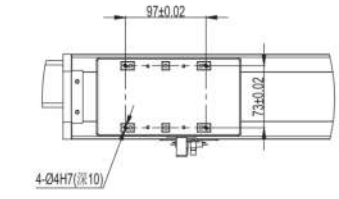
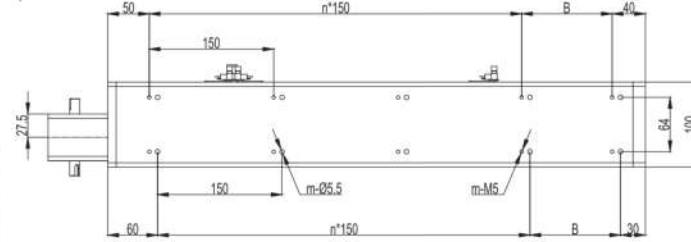
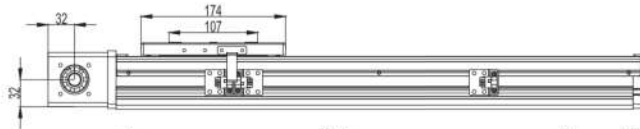
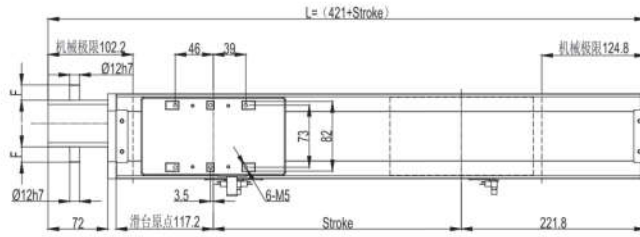
行程 Stroke	100	200	300	400	500	600	700	800	900	1000
L	521	621	721	821	921	1021	1121	1221	1321	1421
B	59	159	109	59	159	109	59	159	109	59
n	2	2	3	4	4	5	6	6	7	8
m	8	8	10	12	12	14	16	16	18	20
Weight (kg)	4.9	5.7	6.5	7.3	8.1	8.9	9.7	10.5	11.3	21.1

■ ECB10-S-RU



行程 Stroke	100	200	300	400	500	600	700	800	900	1000
L	521	621	721	821	921	1021	1121	1221	1321	1421
B	59	159	109	59	159	109	59	159	109	59
n	2	2	3	4	4	5	6	6	7	8
m	8	8	10	12	12	14	16	16	18	20
Weight (kg)	4.9	5.7	6.5	7.3	8.1	8.9	9.7	10.5	11.3	21.1

■ ECB10-S-A



马达安装方式	F
直接	18
间接	26

行程 Stroke	100	200	300	400	500	600	700	800	900	1000
L	521	621	721	821	921	1021	1121	1221	1321	1421
B	59	159	109	59	159	109	59	159	109	59
n	2	2	3	4	4	5	6	6	7	8
m	8	8	10	12	12	14	16	16	18	20
Weight (kg)	4.9	5.7	6.5	7.3	8.1	8.9	9.7	10.5	11.3	21.1

MEMO

半封密螺杆
全封密螺杆
半封密皮带
全封密皮带
齿形带滑块
电动推杆
驱动一体式
直线引动器
减速机