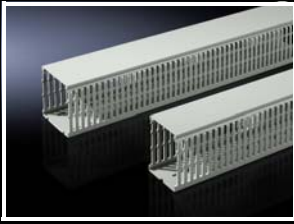


Cable management



Cable duct

for mounting plate

- To fit the cable ducts for the vertical TS section
- If the TS mounting plate is installed in the rear-most position, the horizontally mounted cable ducts are flush with the vertical ones
- For external mounting on surfaces

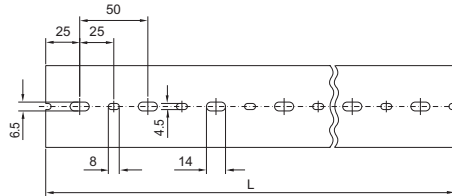
Technical specifications:

- Depth: 80 mm
- Length: 2000 mm, may be cut to length
- Bar width: 5.5 mm
- Slot width: 4.5 mm

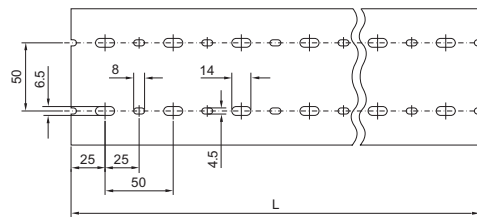
Material:

- Hard PVC
- Flame-resistant, self-extinguishing
- Temperature resistant to +60°C

Width 30, 40 and 60 mm



Width 80 and 100 mm



For enclosure width mm		Fixed length 2000 mm
Length (L) mm		
Width (B) mm	Packs of	Model No.
30	24 set(s)	8800.750
40	20 set(s)	8800.751
60	18 set(s)	8800.752
80	12 set(s)	8800.753
100	12 set(s)	8800.754

Colour:

- Similar to RAL 7030

Supply includes:

- 1 set =
- 1 cable duct with cover



Accessories:

- Aluminium rivet for attachment, see page 664



Aluminium rivet

For secure assembly of cable ducts in conformity with the relevant standards. Also suitable for mounting support rails and punched rails.

To fit

- TS system punchings
- Drilled hole \varnothing 4.5 mm

Packs of	Model No.
100 pc(s).	8800.531



Accessories:

- Cable ducts for vertical TS section, see page 663
- Cable ducts for mounting plate, see page 664