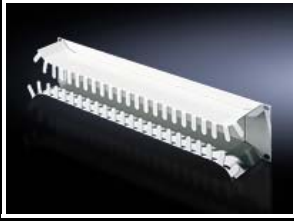


Cable management

482.6 mm (19") cable management



Cable management panel, 2 U

To accommodate fibre-optic and copper cables. Fibres from the patch panels are placed into the tray via openings and may be distributed at the sides. Rounded openings protect the cable sheathing.

Material:

- Sheet steel

Colour:

- RAL 7035

U	Packs of	Model No.
2	1 pc(s).	7269.135



Cable management duct, horizontal

482.6 mm (19")

The duct facilitates concealed, simple cable routing of large quantities of cables to installed equipment within the 482.6 mm (19") attachment level. Large cut-outs ensure convenient, kink-free cable routing to the components top and bottom.

For simple handling, the entire front panel may be removed via quick-release fasteners. After attaching the cables, these are held in position by nylon loop tapes, whilst the duct is resealed.

Material:

- Sheet steel

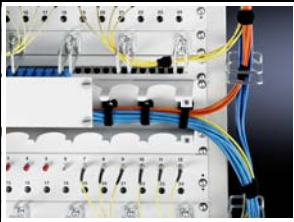
Colour:

- RAL 7035

Supply includes:

- 5 nylon loops

U	Packs of	Model No.
2	1 pc(s).	7158.100



Cable tray, 2 U

For side routing and distribution of fibre-optic and copper cables. In this way, cables inserted into the roof area may be routed at the side of the mounting angles in the upper section of the rack.

Depth: 85 mm

Material:

- Sheet steel

Colour:

- RAL 7035

U	Packs of	Model No.
2	1 pc(s).	7269.235