

# 482.6 mm (19") installation system

## 482.6 mm (19") installation

### Cover, magnetic

For optionally covering the front system punchings in the event of complete air blocking of the front, or in the absence of installed cable fingers or dynamic rack control strip.

| Length<br>m | Packs of | Model No.       |
|-------------|----------|-----------------|
| 5           | 1 pc(s). | <b>5501.895</b> |



### Brush strip, vertical

#### for TS-IT

Within the network distributor, this serves as a flexible infill panel which stylishly conceals the cable management area to the side of the 482.6 mm (19") mounting level. The brush strip facilitates convenient cable routing from the side and rear distributor area to the front connection level. The clearance required in front of the mounting level is at least 75 mm.

Within the TS, the brush strip is mounted at the side on the vertical frame section, on horizontal or vertical punched sections. There is an additional mounting option directly on the 482.6 mm (19") mounting level of the TS.

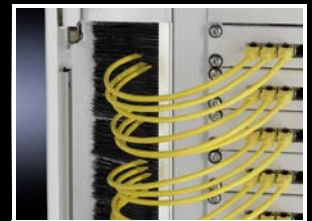
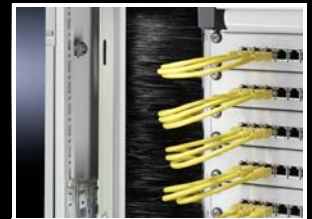
#### Material:

- Aluminium section with brush strip:  
Plastic, UL 94-V0

#### Supply includes:

- 1 set = 4 brush strips,  
Length 950 mm each

| For enclosure height<br>mm | Packs of | Model No.       |
|----------------------------|----------|-----------------|
| 2000                       | 1 set(s) | <b>7827.544</b> |



### Mounting panel 482.6 mm (19"), 2 U

For fast integration of smaller mounting units within the 482.6 mm (19") level, such as potential equalisation rails, distributor boxes, small electrical components etc.

Simple screw-fastening of the components to the integral 25 mm system punchings.

#### Material:

- Sheet steel

#### Surface finish:

- Zinc-plated

#### Supply includes:

- Assembly parts

| Panel height<br>U | Panel width<br>mm | Packs of | Model No.       |
|-------------------|-------------------|----------|-----------------|
| 2                 | 450               | 1 pc(s). | <b>7151.300</b> |

