

Network/server enclosures TS IT

Accessories

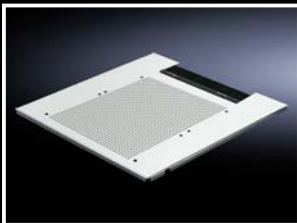
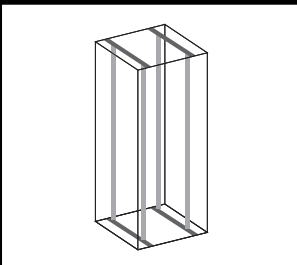
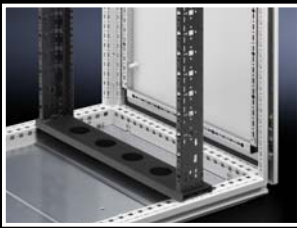


Mounting frame, 482.6 mm (19") for TS, TS IT

Firmly linked 482.6 mm (19") mounting frame for integration of a 482.6 mm (19") mounting level within a TS frame structure. Profiles analogous to TS IT for complete system compatibility, including tool-free assembly. Depth-variable mounting between the roof and base frames. Individual height units bi-directionally numbered. Mounting frame at the front, prepared for the integration of cable management and Dynamic Rack Control (RFID), mounting frame at the rear for space-saving integration of the PDU busbar, in the Zero-U space on both sides.

Load capacity:

- Up to 1,000 kg static load, with even load distribution on two mounting frames, with full installation.



Additional fastening attachment for mounting angles for TS IT

for TS IT

Prevents the mounting angles from twisting in case of unevenly distributed loads. Secured directly between the mounting angle and a mounting section on the outer mounting level of the TS frame structure. Tool-free mounting, with optional screw fastening.

Material:

- Sheet steel

Width mm	Height mm	Installation position	Packs of	Model No.
600	1800	front	1 pc(s).	5501.242
600	1800	rear	1 pc(s).	5501.245
800	1800	front	1 pc(s).	5501.252
800	1800	rear	1 pc(s).	5501.255
600	2000	front	1 pc(s).	5501.262
600	2000	rear	1 pc(s).	5501.265
800	2000	front	1 pc(s).	5501.272
800	2000	rear	1 pc(s).	5501.275
600	2200	front	1 pc(s).	5501.282
600	2200	rear	1 pc(s).	5501.285
800	2200	front	1 pc(s).	5501.292
800	2200	rear	1 pc(s).	5501.295

Material:

- Sheet steel

Surface finish:

- Primed

Colour:

- RAL 9005

Supply includes:

- Assembly parts

Note:

- The outer mounting level of the enclosure frame is left free for other installed equipment; all-round compartmentalisation with air baffle plates is supported.

Available from November 2014

Gland plate, one-piece, vented for TS, TS IT

for TS, TS IT

To completely cover the open base assembly in one piece. Perforated over the entire surface. Cold air is able to flow in from the base or base/plinth area. This ensures the inflow of cold air, particularly in enclosures with rack climate control. With rear brush strip for user-friendly cable entry from below over the entire enclosure width. Integral card guides mean that filter mats are easily accommodated and replaced.

Material:

- Sheet steel

Surface finish:

- Zinc-plated

Supply includes:

- Gland plate with filter mat, including assembly parts

For enclosure width mm	Packs of	Model No.
600	2 pc(s).	5501.225
800	2 pc(s).	5501.235

Surface finish:

- Spray-finished

Colour:

- RAL 9005

Supply includes:

- Assembly parts

For enclosures		Packs of	Model No.
Width mm	Depth mm		
800	600	1 pc(s).	5502.310
800	800	1 pc(s).	5502.330
600	1000	1 pc(s).	5502.340
800	1000	1 pc(s).	5502.350
600	1200	1 pc(s).	5502.360
800	1200	1 pc(s).	5502.370



Also required:

- Base mount for TS IT in accordance with the enclosure depth, see Cat. 34, page 524



Accessories:

- Spare filter mat, 5502.380