

Base/plinth

Flex-Block base/plinth system

Flex-Block corner pieces

for TS, TS-IT, SE, PC

High-strength plastic corner pieces for individual tool-free assembly with Flex-Block trim panels and accessories.

Material:

- Corner pieces: Fibreglass-reinforced plastic
- Cover caps: ABS

Colour:

- RAL 9005

Supply includes:

- 1 set = 4 corner pieces
4 cover caps
Assembly parts for mounting on the enclosure

Corner pieces height mm	Model No.
100	8100.000
200	8200.000



Accessories:

- Flex-Block trim panels, see page 511
- Punched rail 23 x 23 mm, see page 611
- Baying clip 8000.100, see page 511
- Adaptor sleeve 8000.500, see page 522
- Base mounting plate 2817.000, see page 516



Flex-Block trim panels

for Flex-Block corner pieces

For tool-free assembly. With symmetrical enclosure dimensions, trim panels are identical in the width and depth.

Material:

- Sheet steel

Colour:

- RAL 9005

Supply includes:

- 1 set = 2 trim panels

100 mm high, solid

For enclosure width and depth in mm	Model No.
300	8100.300
400	8100.400
500	8100.500
600	8100.600
800	8100.800
1000	8100.010
1200	8100.120
1600	8100.160
1800	8100.180

200 mm high, solid

For enclosure width and depth in mm	Model No.
300	8200.300
400	8200.400
500	8200.500
600	8200.600
800	8200.800
1000	8200.010
1200	8200.120

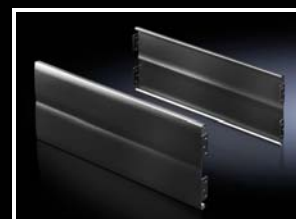
100 mm high, vented

For enclosure width and depth in mm	Model No.
600	8100.602
800	8100.802



Accessories:

- Filter mats for vented Flex-Block trim panels 7583.500, see page 517



Baying clip

for baying the Flex-Block corner pieces

Tool-free baying of Flex-Block base/plinths via a simple clip system.

Material:

- Fibreglass-reinforced plastic

Colour:

- RAL 9005

Packs of	Model No.
12 pc(s).	8000.100

