

Roof/wall mounting

Roof

Roof plate

for cable entry, two-piece for TS, TS-IT

In exchange for the standard roof. Equipped with a sliding angular bracket in the rear section. Rubber cable clamp strip on both sides for attaching cable bundles and bunched cables.

Thanks to the symmetrical design of the TS frame, side cable entry can also be achieved by rotating the roof plate. The two-piece design allows convenient retrofitting.

Material:

– Sheet steel

Colour:

– RAL 7035

For enclosures		Model No.
Width mm	Depth mm	
600	600	7826.665
600	800	7826.685
600	1000	7826.605
800	600	7826.865
800	800	7826.885
800	1000	7826.805
800	1200	7826.825



Roof plate, vented

for TS, TS-IT

In exchange for the standard roof.

72 mm high roof plate, all-round vent slots and clamp strip for cable entry. The two-piece design allows convenient retrofitting.

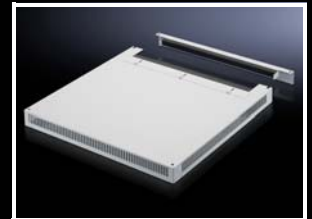
Material:

– Sheet steel

Colour:

– RAL 7035

For enclosures		Model No.
Width mm	Depth mm	
600	600	7826.669
600	800	7826.689
800	600	7826.869
800	800	7826.889
800	1000	7826.809



Roof mounting screw

For screw-fastening the roof plate instead of eye-bolts. With contact washers for potential equalisation.

Thread: M12

Material:

– Steel

Surface finish:

– Zinc-plated

Supply includes:

- 20 panhead Allen screws M 12 x 20
- 20 serrated sealing washers A 12.5

Packs of	Model No.
20 pc(s).	4198.000

