

Roof/wall mounting

Wall mounting



Wall mounting bracket

for KS

For attachment to the wall, only possible from the outside of the enclosure.

Material:

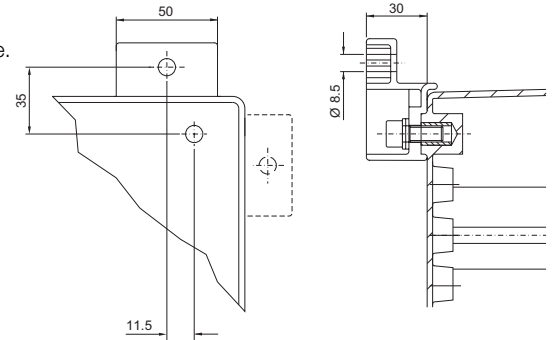
- Fibreglass-reinforced polyamide¹⁾

Supply includes:

- Assembly parts for mounting on the enclosure.

Colour	Packs of	Model No.
Similar to RAL 7035	4 pc(s).	1483.010
Similar to RAL 9011	4 pc(s).	9266.000¹⁾

¹⁾ With graphite additive for Ex applications



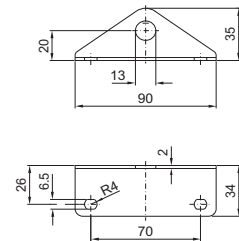
Wall angle

For compact enclosures (additional holes required in the enclosure).

Supply includes:

- Assembly parts for mounting on the enclosure

Material	Colour	Packs of	Model No.
Sheet steel	RAL 7035	4 pc(s).	2505.510
Stainless steel 1.4301 (AISI 304)	-	4 pc(s).	2583.010



Wall bracket

For roof-side wall attachment of TS and SE with a low depth and e.g. heavy components on the door or built-in swing frame.

Material:

- Sheet steel

Surface finish:

- Zinc-plated

Packs of	Model No.
4 pc(s).	4595.000

Possible alternative:

- With TS 8 inside the enclosure (without mounting plate), buying bracket 800.470, see page 546