

Interior installation

Rail systems

C rails

for TS, SE

For direct external mounting between the horizontal or vertical TS, SE enclosure sections. Thanks to the universal mounting piece, the C rails may optionally be attached to the inner or outer level of the TS 8 frame.

Material:

– Sheet steel

Surface finish:

– Zinc-plated

Supply includes:

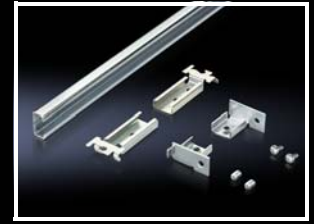
– Assembly parts

For enclosure width/depth mm	Length mm	Packs of	Model No.
400	298	4 pc(s).	7828.040
500	398	4 pc(s).	7828.050
600	498	4 pc(s).	7828.060
800	698	4 pc(s).	7828.080
1000	898	4 pc(s).	7828.100
1200	1098	4 pc(s).	7828.120



Accessories:

– Cable clamps, see page 666



System support rails

For heavy installed equipment such as transformers. T-head screw and slot in the support rail accommodate all mounting dimensions.

Installation options:

- On the vertical TS, SE enclosure section
 - Via snap-on nut 8800.808 (Fig. 1)
 - Via adaptor rail for PS compatibility
 - Height-offset, via TS punched rail 25 x 38 mm (Fig. 2)
- On the horizontal TS enclosure section
 - In the width
 - In the depth (without mounting plate)
- In the case of SE, additionally on the horizontal section
 - In the width, bottom/top
 - In the depth, bottom (without mounting plate)
 - In the depth, top (without mounting plate) using snap-on nuts 8800.808 (Fig. 1)
- On base configuration rail for CM

Material:

– Sheet steel

Surface finish:

– Zinc-plated

Supply includes:

– 2 system support rails (45 x 25 mm)
 – 4 T-head screws M12 x 60 mm
 – Assembly parts

For enclosure width mm	Packs of	Model No.
600	2 pc(s).	4361.000
800	2 pc(s).	4362.000
1000	2 pc(s).	4347.000
1200	2 pc(s).	4363.000



Accessories:

– Width divider e.g. for the installation of 2 system support rails (for 600 mm width) in 1200 mm wide enclosures, see page 523
 – Snap-on nut M8, 8800.808, see page 618
 – Adaptor rail, see page 610
 – TS punched rail 25 x 38 mm, see page 608



Support rails

for TS, SE, CM

For heavy installed equipment. Particularly suitable for the installation of base isolators.

Installation options:

- On the vertical TS, SE enclosure section
 - Via snap-on nut 8800.808 (Fig. 1)
 - Via adaptor rail for PS compatibility
 - Height-offset, via TS punched rail 25 x 38 mm (Fig. 2)
- On the horizontal TS enclosure section
 - In the width
 - In the depth
- In the case of SE, additionally on the horizontal section
 - In the width
 - In the depth, top
 using snap-on nut 8800.808
- On base configuration rail for CM

For enclosure width/depth mm	Packs of	Model No.	Model No.
		Slotted	Unslotted
400	4 pc(s).	4394.000	–
500	4 pc(s).	4395.000	–
600	4 pc(s).	4396.000	4396.500
800	4 pc(s).	4398.000	4398.500

Material:

– Sheet steel

Surface finish:

– Zinc-plated

Supply includes:

– Assembly parts



Accessories:

– Snap-on nut M8, 8800.808, see page 618
 – Adaptor rail, see page 610
 – TS punched rail 25 x 38 mm, see page 608

Configuration examples:

See from page 598

