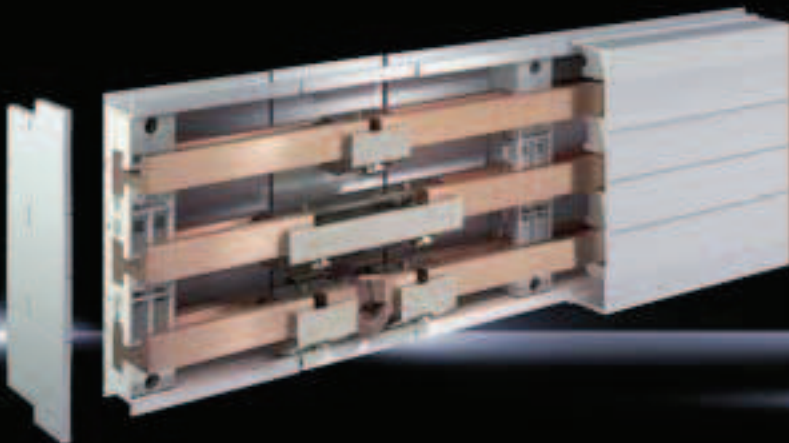


RiLine60 busbar systems 800 A/1600 A (60 mm)



Connection systems Page 280 – 282 **Component adaptors** Page 283 – 289 **Fuse elements** Page 294 – 309

Material:

- Polyamide (PA 6.6).
- Fire protection corresponding to UL 94-V0

Colour:

RAL 7035

Note:

The use of a base tray is required for UL applications.

Short-circuit resistance diagrams:

Available on the Internet.

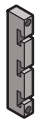
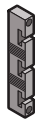

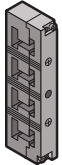
Technical information:

Available on the Internet.

Detailed drawings:

Available on the Internet.

PLS busbar support

Busbar support									
For Rittal system	Packs of	PLS 800		PLS 1600		PLS 1600 PLUS			
No. of poles/bar centre distance		3-pole/60 mm		3-pole/60 mm		4-pole/60 mm			
Internal attachment		■	■	■	■	■			
Busbar support, suitable for top mounting		■	■	■	■	■			
Approvals		–	UL	–	UL	UL			
Model No. SV	4	9341.000	9341.050	9342.000	9342.050	9342.004			



Rittal Canada

RITTAL Systems Ltd.
 6485 Ordan Drive · Mississauga ON L5T 1X2
 Canada
 Phone: +1 (905) 795-0777
 Fax: +1 (905) 795-9548
 Toll-free: 1-800-399-0748
 E-mail: marketing@rittal.ca · www.rittal.ca