

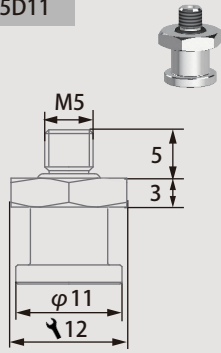
## PN—气动接头系列

### 产品特点

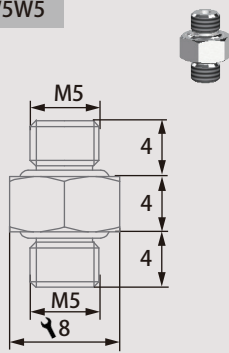
- 用于柔爪连接或断开气路的接头，分为M5和G1/8两种连接螺纹。
- 此系列分为直通和侧通（快插）两种类型。

### 直通接头

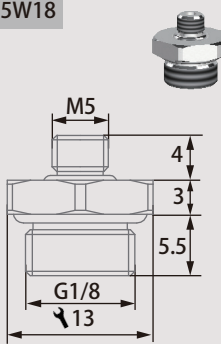
PN-CW5D11



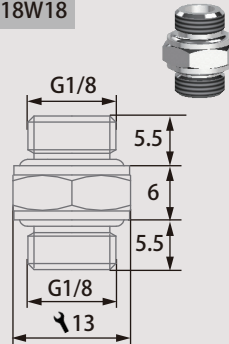
PN-CW5W5



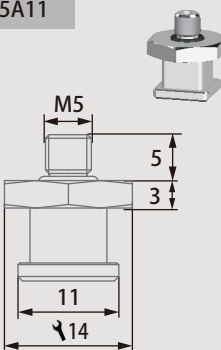
PN-CW5W18



PN-CW18W18

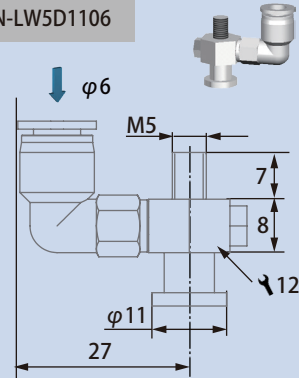


PN-CW5A11

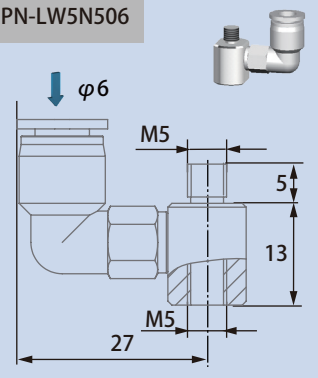


### 侧通接头

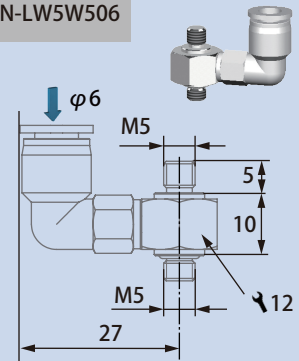
PN-LW5D1106



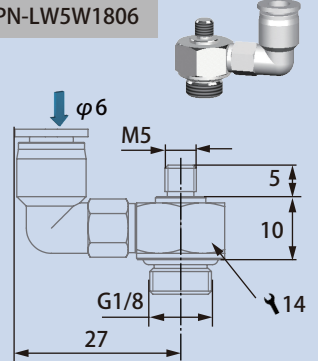
PN-LW5N506



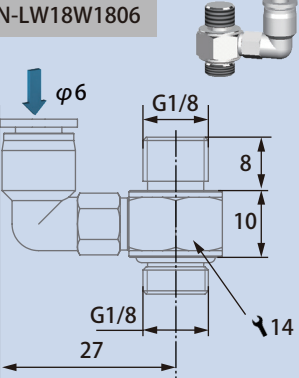
PN-LW5W506



PN-LW5W1806

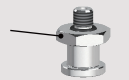


PN-LW18W1806

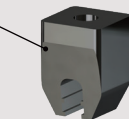


### 安装使用方式

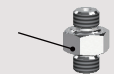
PN-CW5D11



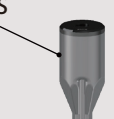
B-20006[P]  
(选配)



PN-CW5W5



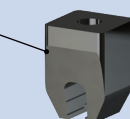
B-3B14[H]/S  
(选配)



PN-LW5D1106



B-20006[P]  
(选配)



PN-LW5W506



B-3B14[H]/S  
(选配)

