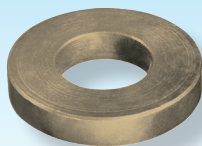


3

## Federteller für Elastomerfedern

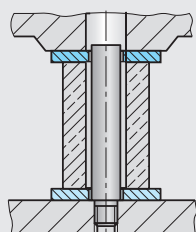


**SN2649-**

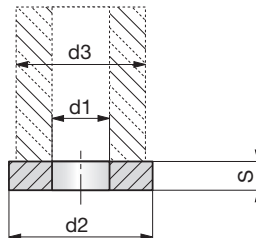
Mat.: MS58  
DIN 9835, A



SN2649-d3



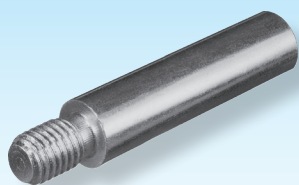
## Spring plates for elastomer springs



d3	d1	d2	S	☐
16	6,5	20	4	10
20	8,5	25	4	10
25	10,5	30	5	10
32	13,5	40	5	10
40	13,5	50	5	5
50	16,5	60	6	5
63	16,5	80	6	5
80	20,5	100	8	2
100	20,5	120	8	2
125	26,0	150	8	2

## Godets ou disque pour ressorts élastomère

## Zentriersäulen für Elastomerfedern

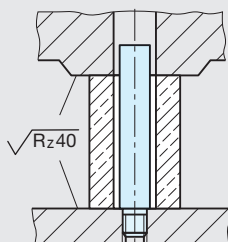


**SN2650-**

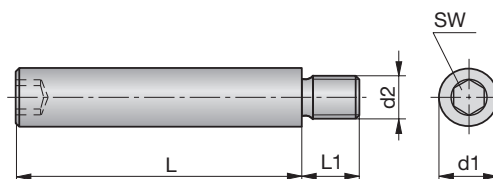
Mat.: ST  
DIN 9835, B



SN2650-d1-L



## Guide bolts for elastomer springs



d1	L	L1	d2	SW	☐	d1	L	L1	d2	SW	☐
6	20	6	M4	3	10	13	80	15	M10	6	6
	25	6	M4	3	10		95	15	M10	6	6
	32	6	M4	3	10		16	40	18	M12	8
8	25	9	M6	4	10	50		18	M12	8	6
	32	9	M6	4	10	63		18	M12	8	6
	40	9	M6	4	10	80	18	M12	8	6	
10	50	9	M6	4	10	20	95	18	M12	8	2
	25	15	M8	5	10		118	18	M12	8	2
	40	15	M8	5	10		50	25	M16	10	2
13	50	15	M8	5	6	63	25	M16	10	2	
	63	15	M8	5	6	80	25	M16	10	2	
	40	15	M10	6	6	95	25	M16	10	2	
	50	15	M10	6	6	118	25	M16	10	2	
	63	15	M10	6	6	140	25	M16	10	2	

## Axes de guidage pour ressorts élastomère