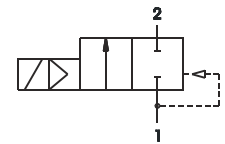
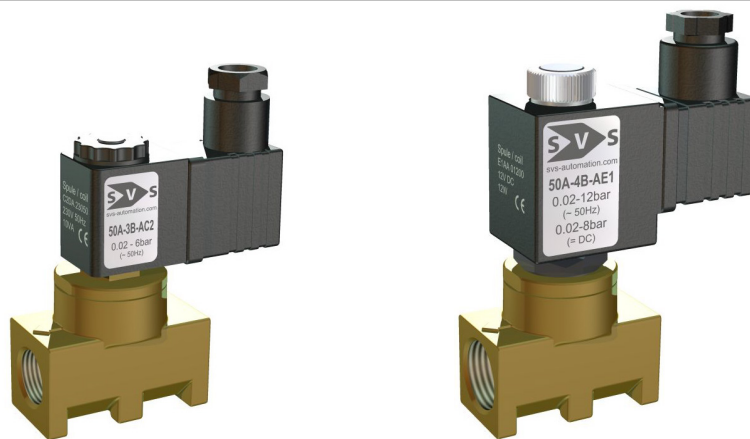


2/2 way solenoid valve normally closed

type 50A
pilot operated, DN 10mm, G3/8" – G1/2", body brass



function A
 (normally closed)

SPECIFICATION	
general	
type of construction	2/2-poppet valve, with diaphragm, normally closed NC, coil 360° rotatable
operator	solenoid
ports	G3/8, G1/2
ambient temperature	-5 °C to +50 °C, higher allowed ambient temperatures on request
fluid temperature	dependent on sealing material and coil
viscosity	max. 21mm ² /s (cst) or 3°E
material	body: brass, tube at type 50A-...-AC2.. brass, at type 50A-...-AE1... stainless steel inner parts: stainless steel, sealing: see type selection
mounting	2 threads M4 on the bottom side
installation	in any position, preferable vertical fixed solenoid coil
unit of supply	without connector
electrical data	
voltage	DC voltage or AC voltage
standard voltage	24V DC, 24V AC, 230V AC
special voltage on request	6V-200V DC, 12V-240V, 50Hz or 60Hz
acceptable voltage tolerance	+/- 10%
power consumption	see specifications at solenoid coils
coil type	temperature class F (155°C), winding class H (180°C)
duty cycle	100% ED (DB), continuous operation
protection class	IP65 according DIN EN 60529 (DIN 40050) with correctly mounted connector
pneumatic – hydraulic	
flow medium	all liquids and gases, which don't attack the used material
max. body housing pressure	PN 25 (bar)
response time	depending on operating pressure and fluid
special equipment on request	Stainless steel AISI304 in place of brass, bright nickel-plated or chemical nickel-plated

E & OE: We reserve the right to change design, dimensions or materials without notice.

type 50A, normally closed							
type * (order-nr.)	NW DN (mm)	ports	maximum differential pressure in bar **				kv-value (m ³ /h)
			coil C2DA		coil E1AA		
			~ (50Hz)	= (DC)	~ (50Hz)	= (DC)	
50A - 3 - A....	10	G3/8	0,02 – 6	-	0,02 – 12	0,02 – 10	1,7
50A - 4 - A....		G1/2					1,7

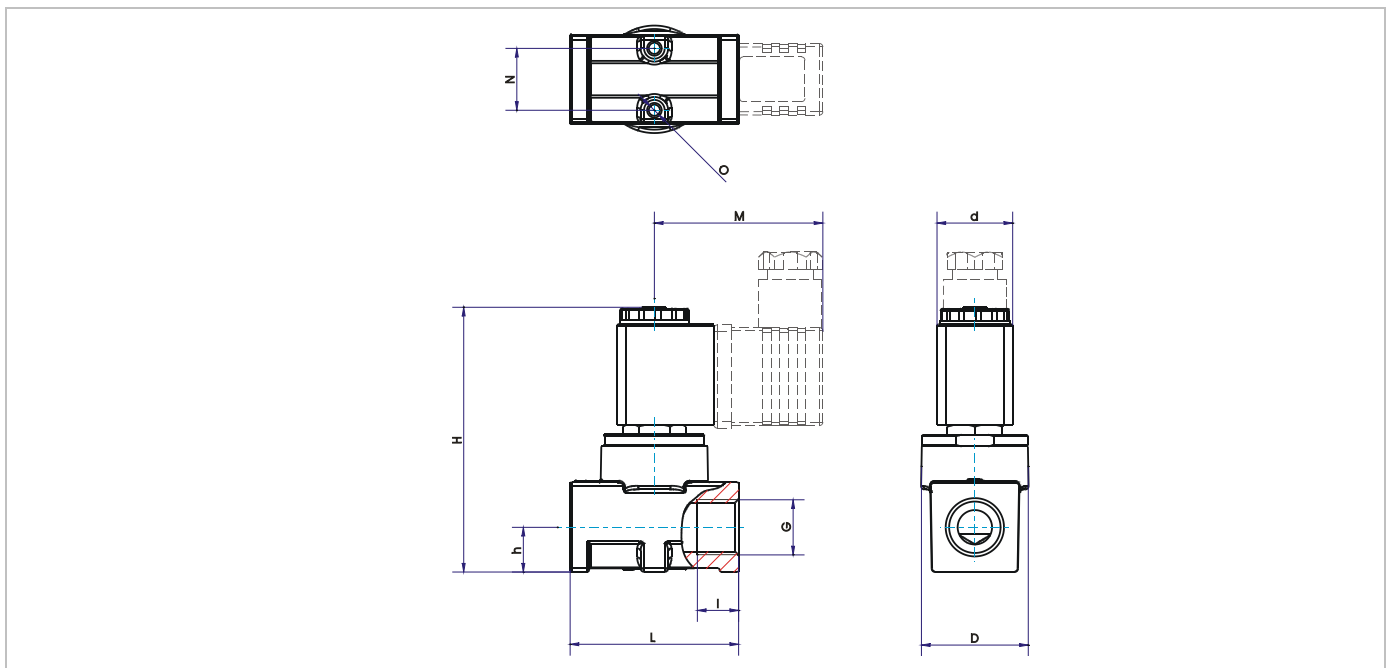
* Type designation (order-nr.) must be completed with sealing material, coil and supply voltage.

** At DC voltage all pressure specifications apply to a fluid temperature up to 80 °C. At higher fluid temperatures, the maximum differential pressure will be reduced by 0,4% / °C. Valves are suitable for vacuum.

sealing material	Code	fluid temperature	applicable for	standard voltage	Code
NBR (Perbunan)	B	max. 80°C	neutral gases and liquids	24V = DC	02400
EPDM	E	max. 130°C	hot water, steam, not for oil and grease	24V ~ (50Hz)	02450
FPM	V	max. 130°C	oil, petrol, oxygen	230V ~ (50Hz)	23050

coil power consumption at 20 °C, protection class, interface					
coil type	inrush power ~ (50Hz) VA	rated power ~ (50Hz) VA	power = (DC) (W)	protection class with/without connector	interface
C2DA	12,5	9	-	IP65 / IP00	Connector (DIN 43650) type B industrial standard
E1AA	30	17	12	IP65 / IP00	Connector DIN EN 175301-803 (DIN 43650) type A

ORDER CODE	
	50 A - 3 B - A E1AA 02400
type	type 50: body brass
function	A = normally closed
ports	3 = G3/8, 4 = G1/2
seal material	B = NBR (Perbunan), E = EPDM, V = FPM
short circuit ring	A = copper short circuit ring
coil type	see specifications of the particular coil
supply voltage	always 5-digit, see code of standard voltage



Dimension tale for type 50A in mm, weight approx. in kg													
type	G	d	D	h	H	l	L	M	N	O	weight (kg)		
50A-3.-AC2DA	G3/8	22	32,5	13	76,5	12	49	50	18	M4	0,28		
50A-3.-AE1AA		30		13	94			52			0,41		
50A-4.-AC2DA	G1/2	22	32,5	13	76,5	12		50			18	M4	0,27
50A-4.-AE1AA		30		13	94			52					0,40