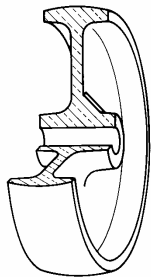


## SERIES 67



### SOLID HIGH TEMPERATURE THERMOSETTING RESIN WHEELS SWIVEL BOLT HOLE BRACKET TYPE “NLX”

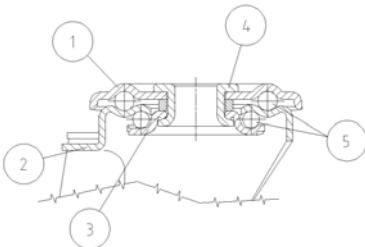
#### Wheel description



**Tread:** solid high temperature thermosetting resin wheels, resistant to temperatures from -20°C and +300°C.  
**Hub:** the plain bearing bore results from a hole in the material forming the centre of the wheel and contains the axle.

#### Bracket description

**Standard duty bracket type NLX (max. carrying capacity 400 daN)**



- 1) **Plate:** AISI 304 stainless steel
  - 2) **Fork:** AISI 304 stainless steel
  - 3) **Ball Racing Ring:** AISI 304 stainless steel
  - 4) **King Pin:** incorporated in top plate and cold riveted
  - 5) **Swivel actions:** double ring of greased balls
- Fitting:** bolt hole