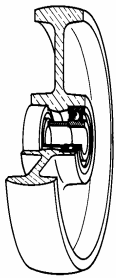


## SERIES 68FV



### SOLID POLYAMIDE 6 WHEELS SWIVEL BOLT HOLE BRACKET TYPE "NLX" WITH BRAKE

#### Wheel description

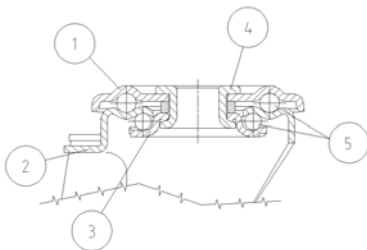


**Tread:** solid polyamide 6 wheels.

**Hub:** The housing is obtained by moulding and contains stainless steel ball bearings.

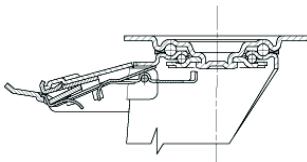
#### Bracket description

**Standard duty bracket type NLX (max. carrying capacity 400 daN)**



- 1) **Plate:** AISI 304 stainless steel
  - 2) **Fork:** AISI 304 stainless steel
  - 3) **Ball Racing Ring:** AISI 304 stainless steel
  - 4) **King Pin:** incorporated in top plate and cold riveted
  - 5) **Swivel actions:** double ring of greased balls
- Fitting:** bolt hole

#### Brake description



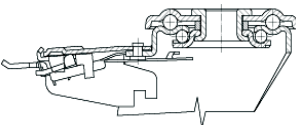
**Diam. 80-150 mm**

#### Front-locking brake

This brake fully locks wheel and castor rotation.

Thanks to its optimised dimensions and fold-away pedal, the brake is easy to engage and extremely compact.

The stainless steel spring has very high corrosion resistance.



**Diam. 150-200 mm**