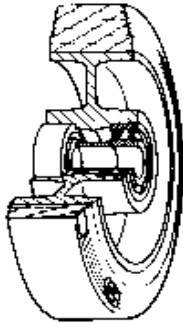


## SERIES 72GS



### SILICONE RUBBER WHEELS FOR HIGH TEMPERATURES ALUMINIUM CENTRE SWIVEL BOLT HOLE BRACKET TYPE "NL"

#### Wheel description



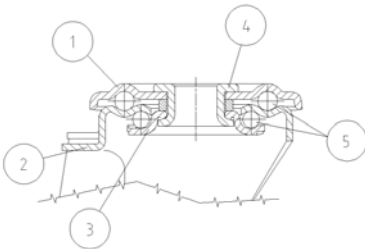
**Tread:** Red non-staining silicone rubber wheels, hardness 80+/-5 Shore A; resistant to temperatures from -30°C and +250°C.

**Centre:** aluminium with threadguards.

**Hub:** The housing is obtained by moulding and turning and contains ball bearings series Z.

#### Bracket description

**Standard duty bracket type NL (max. carrying capacity 400 daN)**



- 1) **Plate:** electrolytically galvanised steel plate
  - 2) **Fork:** electrolytically galvanised steel plate
  - 3) **Ball Racing Ring:** electrolytically galvanised steel plate
  - 4) **King Pin:** incorporated in top plate and cold riveted
  - 5) **Swivel actions:** double ring of greased balls
- Finishing:** electrolytic galvanisation  
**Fitting:** bolt hole