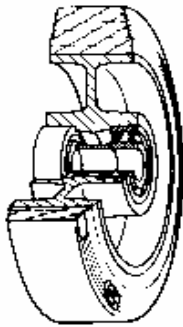


SERIES 72GS



SILICONE RUBBER WHEELS FOR HIGH TEMPERATURES ALUMINIUM CENTRE SWIVEL TOP PLATE BRACKET TYPE “NLX” AND BRAKE

Wheel description



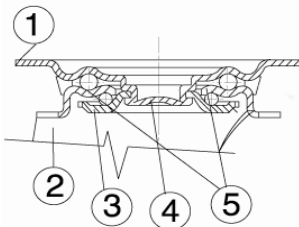
Tread: Red non-staining silicone rubber wheels, hardness 80+/-5 Shore A; resistant to temperatures from -30°C and +250°C.

Centre: aluminium with threadguards.

Hub: The housing is obtained by moulding and turning and contains ball bearings series Z.

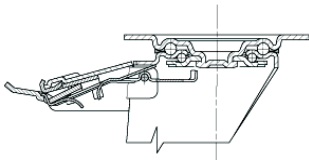
Bracket description

Standard duty bracket type NLX (max. carrying capacity 400 daN)

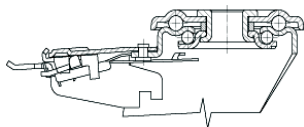


- 1) **Plate:** AISI 304 stainless steel
 - 2) **Fork:** AISI 304 stainless steel
 - 3) **Ball Racing Ring:** AISI 304 stainless steel
 - 4) **King Pin:** incorporated in top plate and cold riveted
 - 5) **Swivel actions:** double ring of greased balls
- Fitting:** top plate

Brake description



Diameters 80-150 mm



Diameters 150-200 mm

Front-locking brake

This brake fully locks wheel and castor rotation.

Thanks to its optimised dimensions and fold-away pedal, the brake is easy to engage and extremely compact.

The stainless steel spring has very high corrosion resistance.