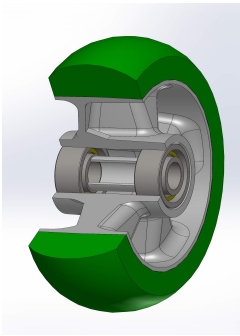


SERIE 62ER



“TR-ROLL” POLYURETHANE WHEELS WITH ERGONOMIC ROUND PROFILE, ALUMINIUM CENTRE, SWIVEL TOP PLATE ELECTROWELDED SPRUNG-LOADED BRACKET TYPE EES MHD

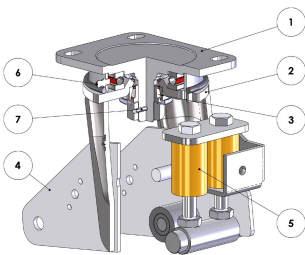
Wheel description



Tread: TR-ROLL polyurethane with ergonomic round profile, hardness 75 Shore A.
Centre: made of cast aluminium
Hub: the housing is obtained by moulding and contains ball bearings series Z

Bracket description

Electrowelded sprung-loaded bracket EES MHD -max load capacity 1000 daN (damping up to 400 daN)



- 1) Top plate: electrolytically galvanised forged steel with integrated pin.
- 2) Main fork: deep-drawn legs electrowelded to the flange and electrolytically galvanised U-shaped component electrowelded to the legs.
- 3) Swivel actions: axial ball bearing and tapered roller bearing
- 4) spring-hinged plates: plates electrowelded to the axle
- 5) Polyurethane springs
- 6) Grease nipple
- 7) Anti-loosening locknut system